

**Lane Community College Resource Use, Tracking, Feedback - Year Reported: 2016/2017
Energy Summary Data**

DESCRIPTION	DATA
Total electricity and natural gas energy resources purchased in 2016/2017*. MMBTU= Millions of British Thermal Units. (Please see the 'Energy Use Index' page for Unit Conversions.)	90,049 MMBTU
Total LCC Building Square footage for 2016/2017	1,304,192 ft ²
Total energy use per building square foot per year for 2016/2017 in Btu and Kbtu per square foot. This is the college's annual Energy Use Index (EUI).	69,046 Btu/ft ² or 69 Kbtu/ft ²
How many average Lane County residential houses^ would the college's total electricity and natural gas energy purchase in 2016/2017 have powered?	Approximately 1679 houses
Total energy cost for 2016/2017	\$1,133,121
Total energy cost per building square foot per year	\$0.87/ft ²
Total energy decrease for 2016/2017 over the baseline year of 2004/2005. (Please see table below for baseline data.)	(11,768) MMBTU or (12)%

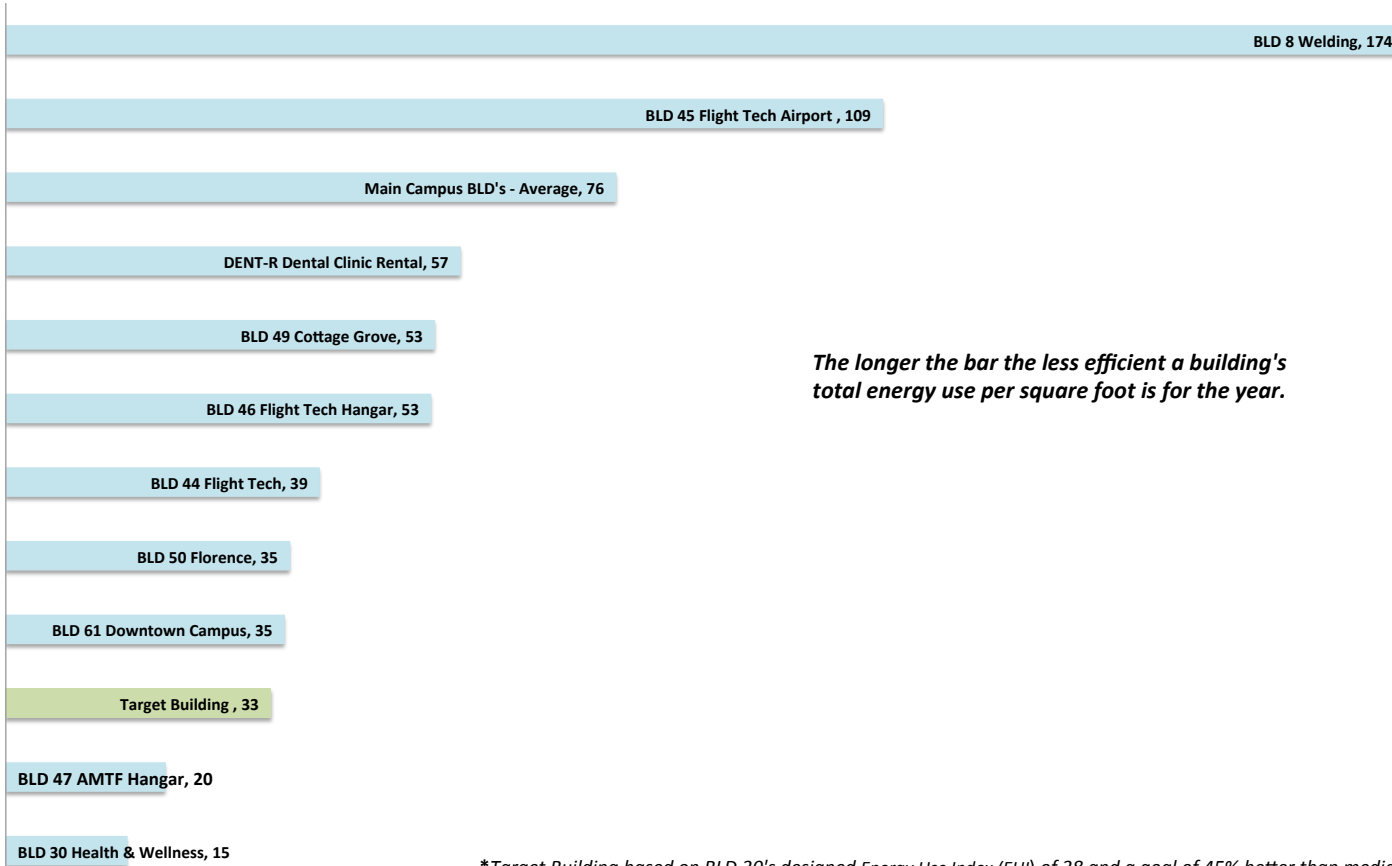
* Includes energy used for heating, cooling, and equipment.

^ Based on the EPUD average customer's monthly electricity usage of 1310 kwh per month or 15,720 kwh per year.

DESCRIPTION	DATA
Total electricity and natural gas energy resources purchased in 2004/2005*. MMBTU= Millions of British Thermal Units. (Please see the 'Energy Use Index' page for Unit Conversions.)	101,817 MMBTU
Total LCC Building Square footage for 2004/2005	1,120,326 ft ²
Total energy use per building square foot per year for 2004/2005.	90,882 Btu/ft ² or 90 Kbtu/ft ²

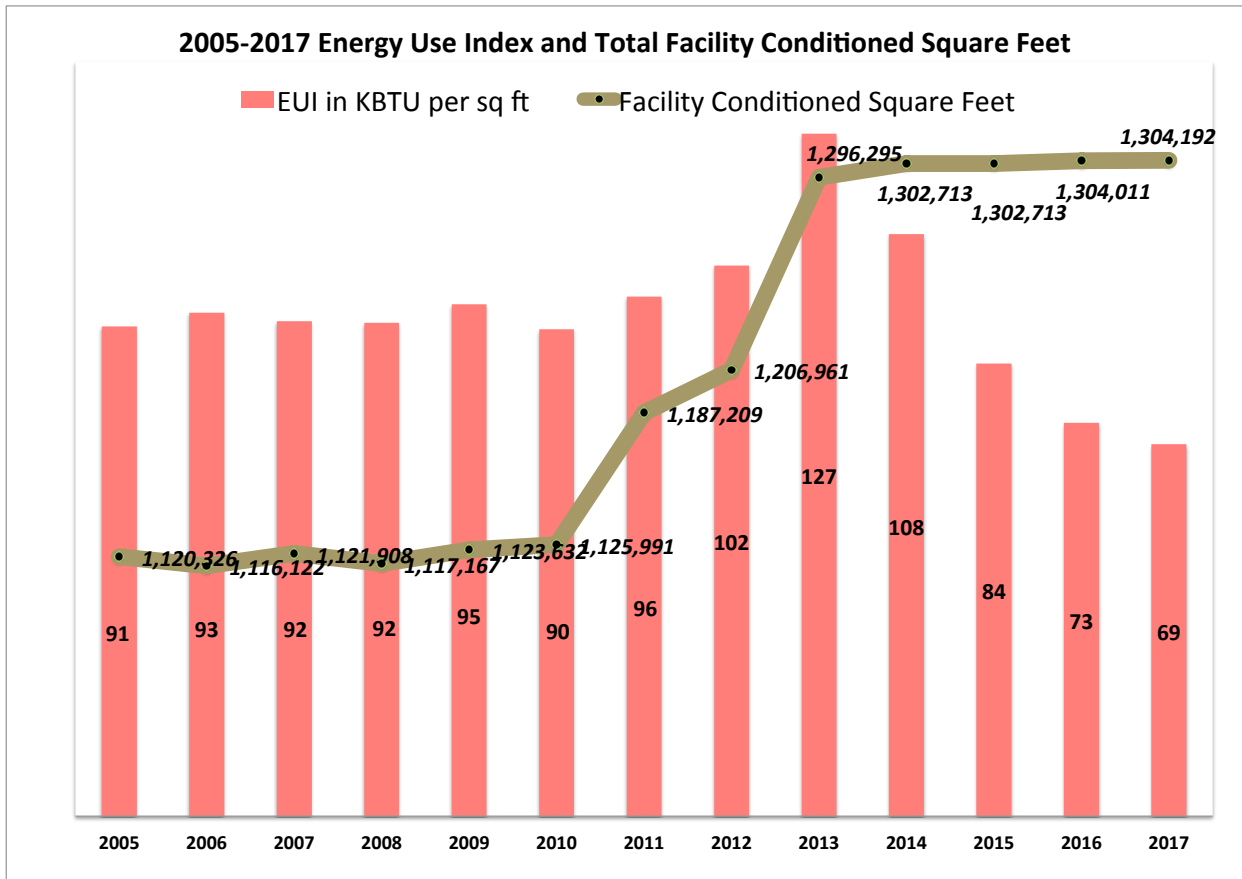
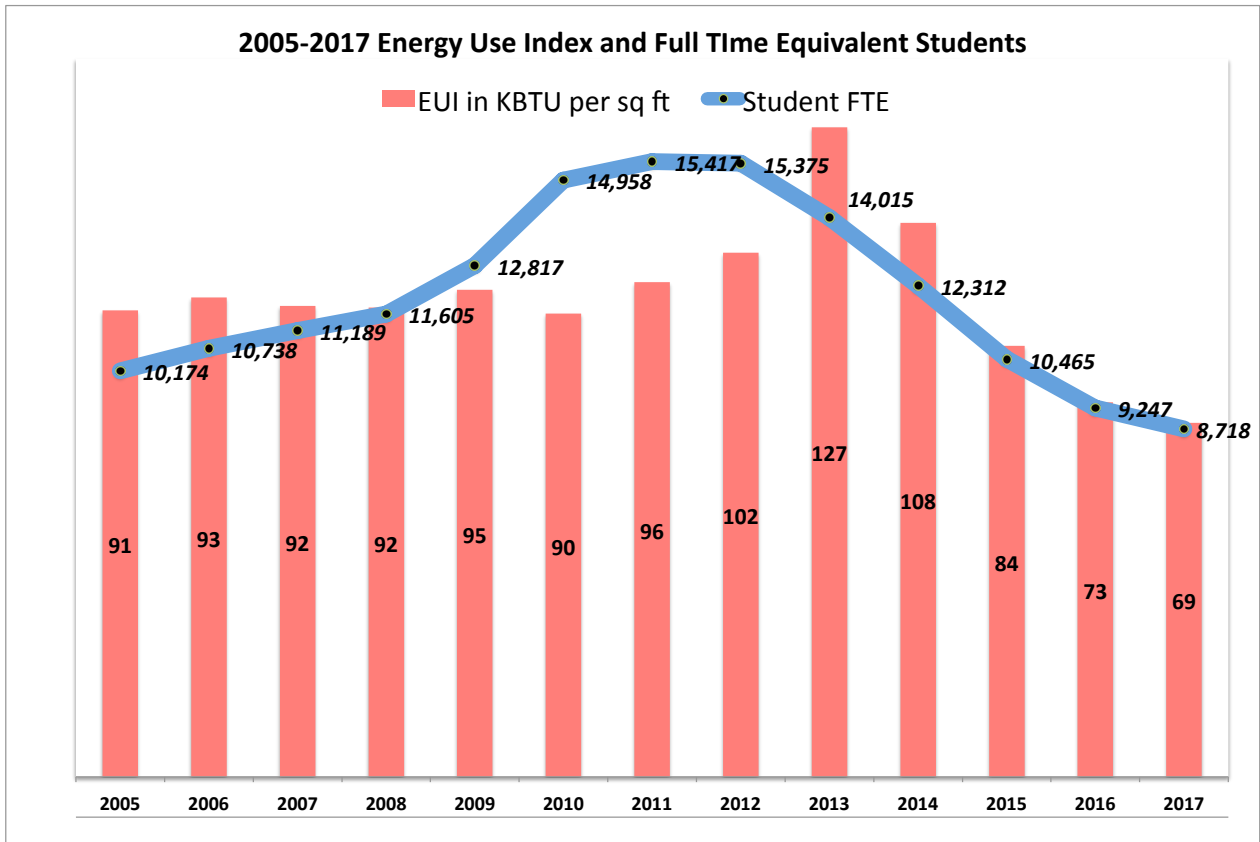
SUMMARY COMMENTS	RECOMMENDATIONS
<i>Continuing our downward trend for lowering energy use index. Contributing factors to this decrease may be the declining staff and student population combined with an increase in building square footage over baseline 2005 and new Central Plant chilled water system coming on line.</i>	<i>Continue with behavior change campaigns to strengthen lower energy use patterns. Start to transition building equipment scheduling to a software for a service (SAS) model in buildings that are BACnet compatible.</i>
<i>Energy use index is calculated by taking the total energy use and dividing it by total square footage of our facilities.</i>	<i>Work with Facilities staff to make recommendations aligning with LEED v4. Implement building equipment maintenance tune ups, widen occupied room temperature setpoints</i>

2016-2017 LCC Facilities Total Energy Use Index in Kilo British Thermal Units per Square Feet per year



The longer the bar the less efficient a building's total energy use per square foot is for the year.

**Target Building based on BLD 30's designed Energy Use Index (EUI) of 38 and a goal of 45% better than median EUI.*



**Lane Community College Resource Use, Tracking, Feedback – Year Reported: 2016/2017
Energy Summary Data**

Energy Use Index

Source or Action	Description	Value
Utility Data	Electricity (kwh) ¹	12,216,947
Convert to MMBtu	Electricity (MMBtu)	41,684
Utility Data	Natural gas and diesel No. 2 fuel(therms) ^{1,4}	483,649
Convert to MMBtu	Natural gas and diesel No. 2 fuel(MMBtu)	48,365
Convert to MMBtu	Total energy (MMBtu)	90,049
Convert to KBtu	Total energy (KBtu)	90,049,123
Convert to kwh	Total energy (kwh)	26,391,888
LCC Data	FTE students 2	8,718
LCC Data	Staff 2	913
LCC Data	Total FTE students + staff ²	9,631
LCC Data	Building square footage ³	1,304,192
	Total energy per student FTE per year (KBtu)	10,329
Energy Use Index	Total energy per campus user per year (KBtu)	9,350
Energy Use Index	Total energy use per building square foot per year (KBtu/ft2)	69
Energy Use Index	Total energy use per building square foot per year (Btu/ft2)	69,046
Energy Use Index	Total energy use per building square foot per year (kwh/ft2)	20

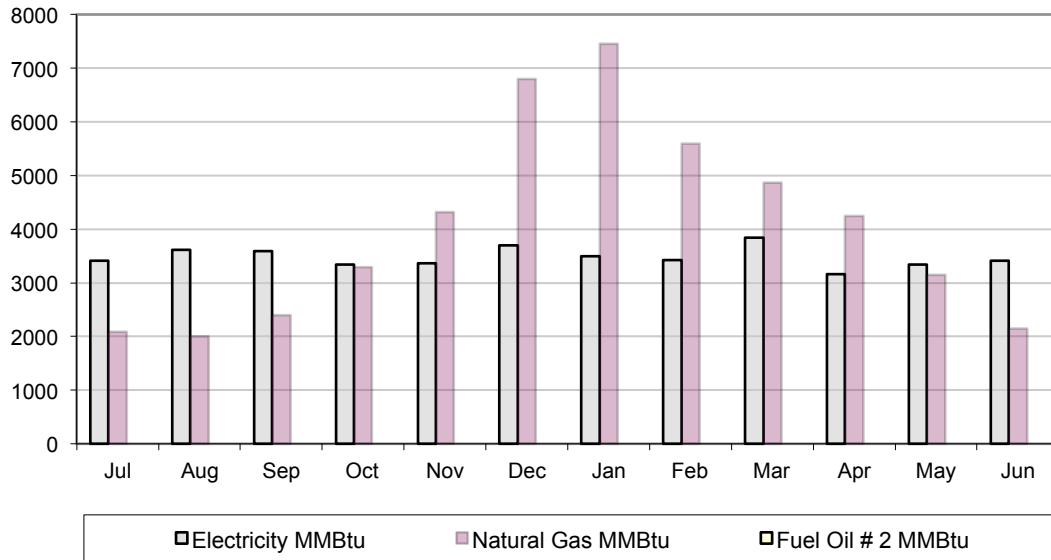
1 Information on the Institute for Sustainable Practices data volume in the folder Energy Indicator Reports on newberry\dca\ISP\Energy Indicator Reports\2017 and in a three ring binder labeled "Utilities Summary" located in Building 7, Campus Services RM 203.
2 Information from Institutional Research, Assessment and Planning, Craig Taylor. Funding FTE used for students. FY headcount used for Staff from https://www.lanecollege.edu/research/ir/staff-demographics
3 See Attachment " Lane Community College Building Square Footage"
4 No diesel No. 2 deliveries made to the 30th boilers FY10 thru FY17.

Lane Community College Resource Use, Tracking, Feedback
Year Reported: 2016/2017
Energy Summary Data

Cost Data

Source or Action	Description	Value
Utility Data	Electricity (kwh) ¹	\$ 874,407
Utility Data	Natural gas and diesel No. 2 fuel(therms) ^{1,4}	\$ 258,714
	Total energy costs	\$ 1,133,121
LCC Data	FTE students (actual) ²	8,718
LCC Data	Staff ²	913
LCC Data	Total campus users (FTE students + staff)	9,631
LCC Data	Building square footage ³	1,304,011
Student Energy Costs	Total energy cost per student FTE per year (dollars)	\$ 129.98
	Total energy cost per campus user per year (dollars)	\$ 117.66
Costs Per SqFt.	Total energy cost use per building square foot per year (\$/ft2)	\$ 0.87

2016-2017 Fuel Use Split
Monthly Energy Use in Millions of British Thermal Units



2016-2017 Fuel Cost Split
Monthly Energy Costs

