

Governance Sub-Committee Proposal on Decision Making Protocols Process Issues

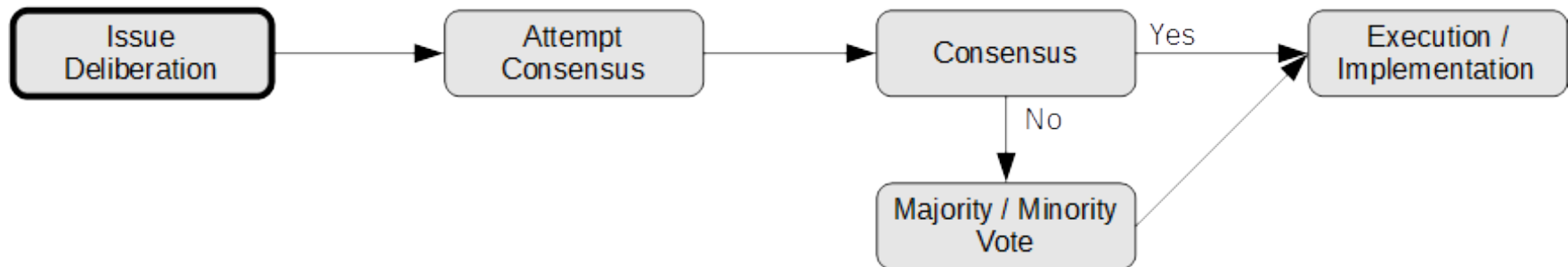
Process issues refer to those relating to “how” we do our work, not the substance or content of decisions. It relates to the approach councils will take for doing the work, not deliberating on the work itself.

Examples of a process decision:

- Appointment of a sub-committee
- Election of a chair
- Agenda setting

Example of decisions that are not process issues:

- Creating workplans



Governance Sub-Committee Proposal on Decision Making Protocols Substantive Issues

Consensus is a goal of governance councils and should be the primary decision style. Consensus may be expressed through unanimous agreement; it may be a modified consensus where members can live with a decision even though they may not be in full support.

The decision making protocol reflects and is in compliance with Board Policy 325 – College Governance Process. It has three phases:

Phase I – The method of decision making remains consensus. All efforts should be made to reach consensus.

Phase II – If consensus is not reached Councils will decide on using one or more of the Optional Resolution Steps in order to continue to strive for consensus.

Phase III – In the event that consensus is not timely reached a poll may be conducted, with minority and majority reports submitted to the responsible administrator, and the responsible administrator will make the decision, informed by the multiple perspectives voiced and the majority and minority reports and provide the rationale for the decision to the Council.

