



March 15, 2012

Mr. Shashi Bajracharya
Lane County Public Works
3040 N. Delta Highway
Eugene, OR 97408

Attention: CIP 2013-17

Dear Mr. Bajracharya,

In 2007, Lane Community College added Sustainability as a Core Value and more recently adopted Sustainability Strategic Directions, which guide the college's present and future decisions. Part of the Core Value and Strategic Direction goals are to "promote a socially, environmentally, and economically sustainable society," and "to increase energy conservation and carbon neutrality." Additionally, Lane Community College's Wellness Program encourages active lifestyles to reduce employee insurance costs and provide wellness to the entire college community in all aspects of their lives.

In support of those values and goals, we encourage students and employees to find alternate ways to get to the 30th Avenue campus. The college provides group bus passes to students and staff who enroll in credit classes and has a carpool program. These two programs assist people travelling to campus who wish to reduce their transportation impacts or who do not have the means to drive. Still, the majority of our students come to the college in automobiles, which is counter to our sustainability goals. Another group of people come to college not by bus or car, but ride their bicycles from Eugene over 30th Avenue or from Springfield down McVay highway.

As the benefits of cycling become better known and as fuel prices rise, more people are beginning to bicycle to the college. While we have no census of cyclists who ride over 30th Avenue, the number has steadily increased over the past few years according to those who ride over the hill and if one were to take a drive over the hill during most parts of the day, at least one cyclist will be noted. According to surveys of the college community, many more would ride over the hill if there were some type of barrier from the high-speed traffic. Currently,

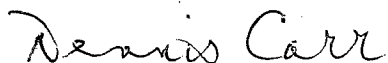
cyclists that ride 30th Avenue undertake considerable risk from traffic and roadside debris. As your data shows, cyclists do occasionally get hit by cars on 30th. Improved bicycle connectivity on 30th will reduce life safety concerns for the county.

Lane Community College would like to provide comment on the 30th Avenue overlay project. According to the project documents, no work will be done that will address bicycle connectivity or the shoulders of the road. We would like to ask the County to reconsider that component of the project and request that resources be directed to improve bicycle connectivity to the 30th Avenue Campus.

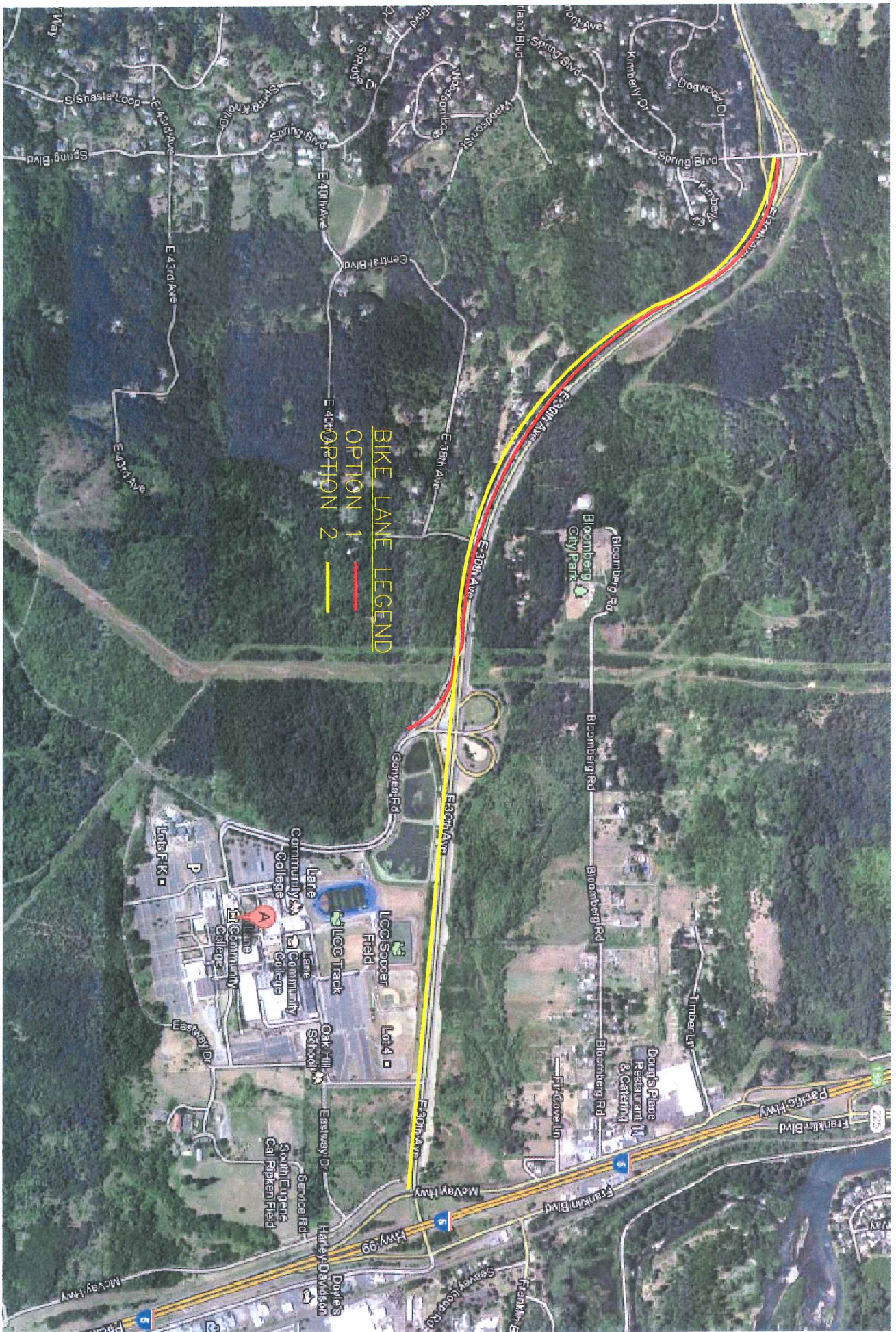
We would like to propose two options for better bicycle connectivity to the 30th Avenue campus, both on the south side of 30th Avenue. Please see the attached map. Option 1 would provide a designated bike lane from the Spring Boulevard overpass to the Gonyea Road exit. Cyclists can then access the bike lanes that parallel to Gonyea and into the college. Option 2 designates a bike lane from the overpass to Eldon Schafer Drive where cyclists can enter the college. Down the majority of 30th Avenue, there is ample shoulder that could be improved, striped, and maintained to support cyclists. If the bike lane were physically separated from the auto traffic (as most cyclists would prefer), the bike lane could be made into a two-way "cycletrack" that can serve cyclists travelling both directions.

The overlay project represents an opportunity to improve the transportation profile for the college, allowing employees, students, and visitors a way to access the services and programs the college provides in a way that reduces the automobile traffic burden on the roadway and at Lane Community College. Cycling promotes healthy lifestyles, reduces our dependence on limited resources, and is an economical manner of transportation. When the bicycle connectivity on 30th Avenue is improved, more people will ride bicycles, fewer people will drive, and road maintenance costs will decrease. We urge you to take the needs of cyclists travelling on 30th Avenue in consideration while discussing this project.

Sincerely,



Dennis Carr
Director, Human Resources



BIKE LANE LEGEND

- OPTION 1 —
- OPTION 2 —