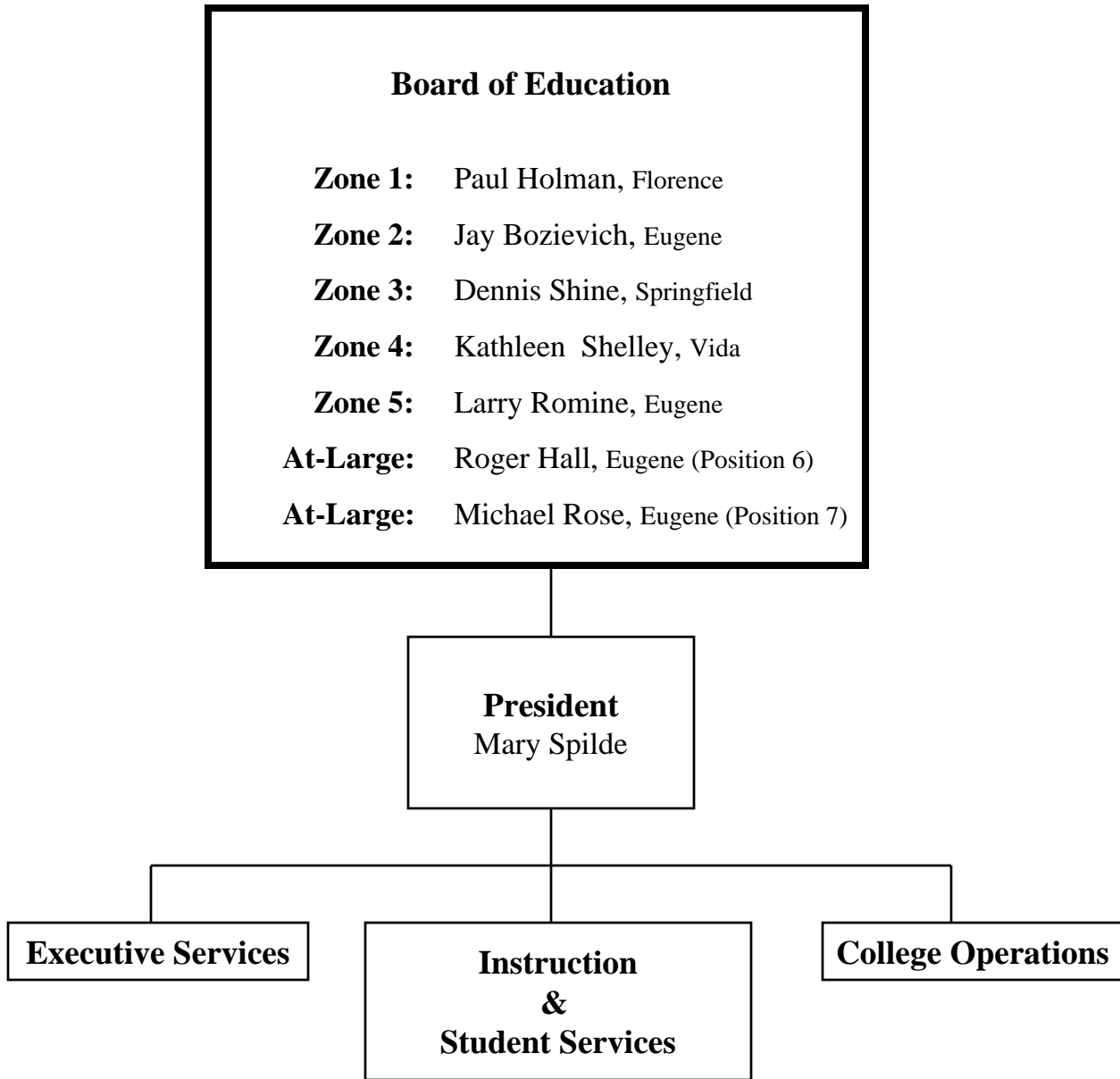
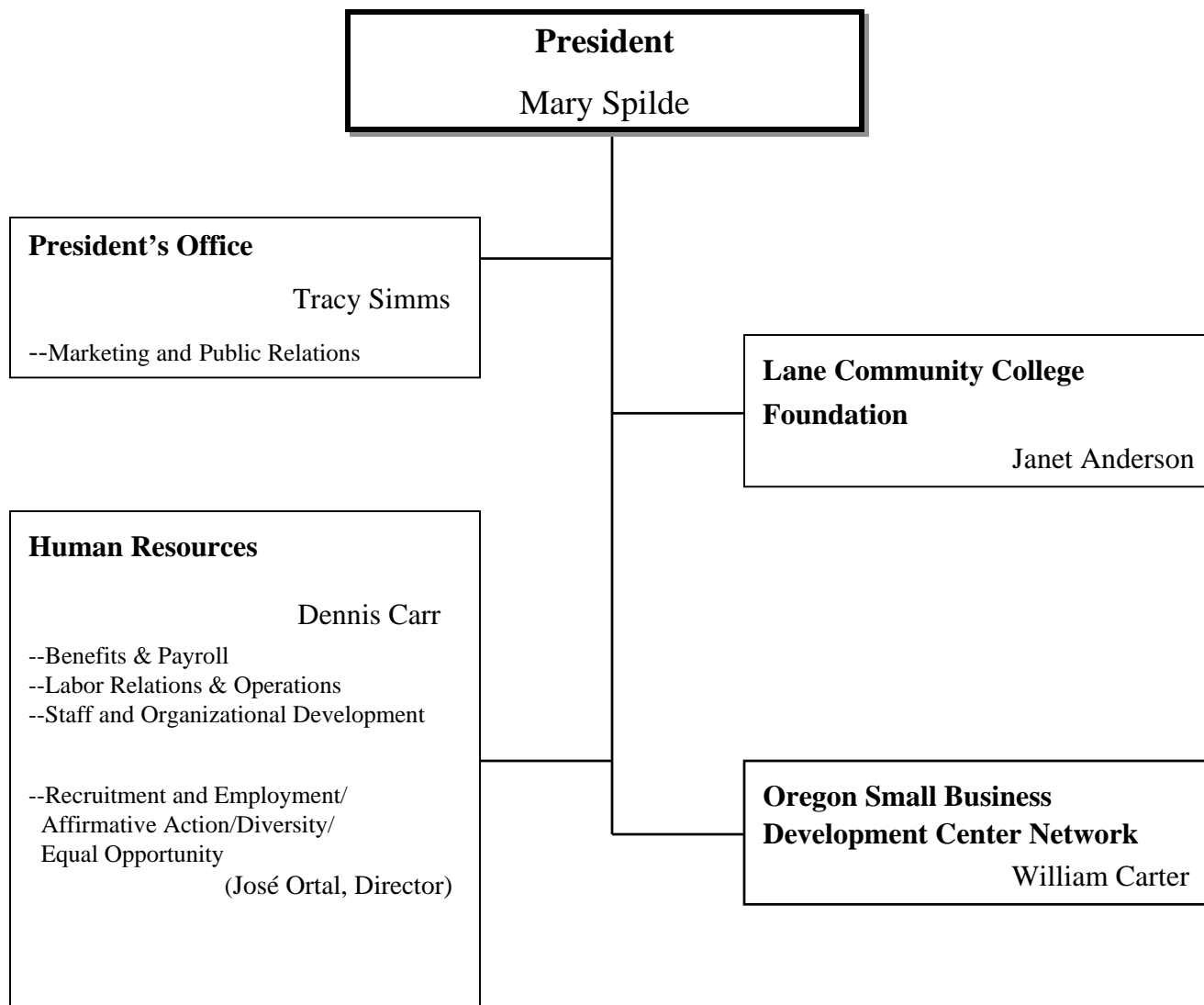


Lane Community College Organization Chart

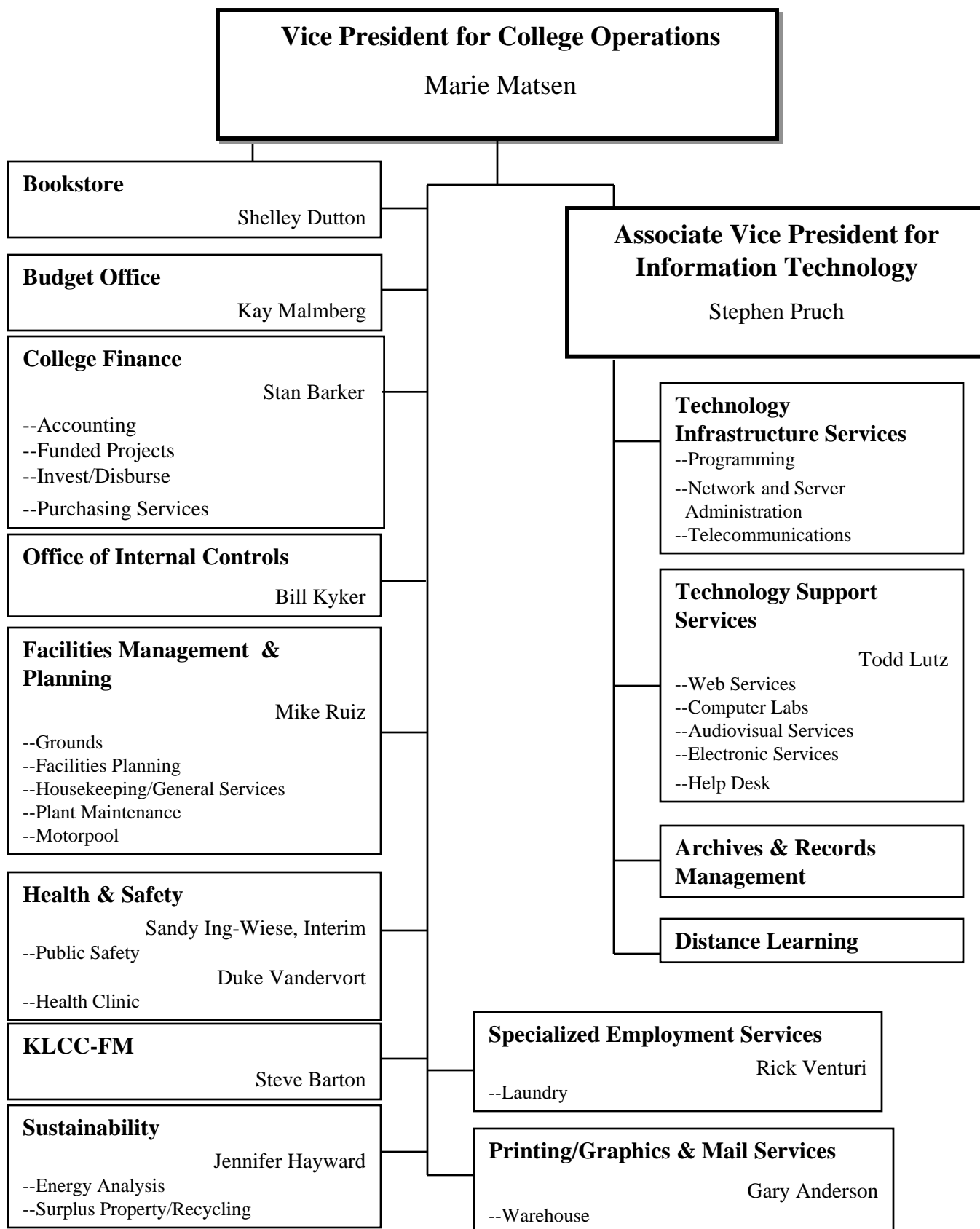
(as of May 2005)



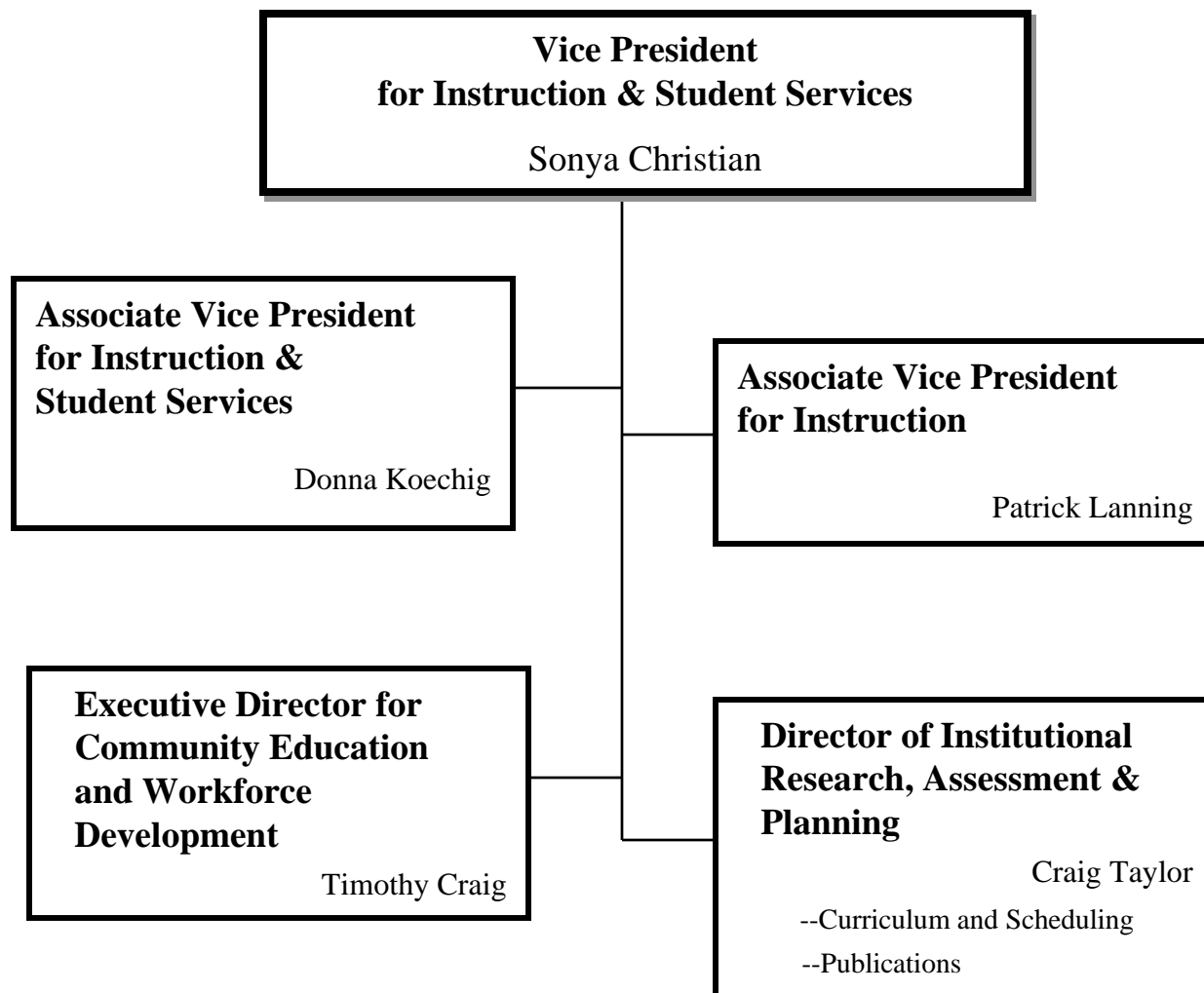
Executive Services



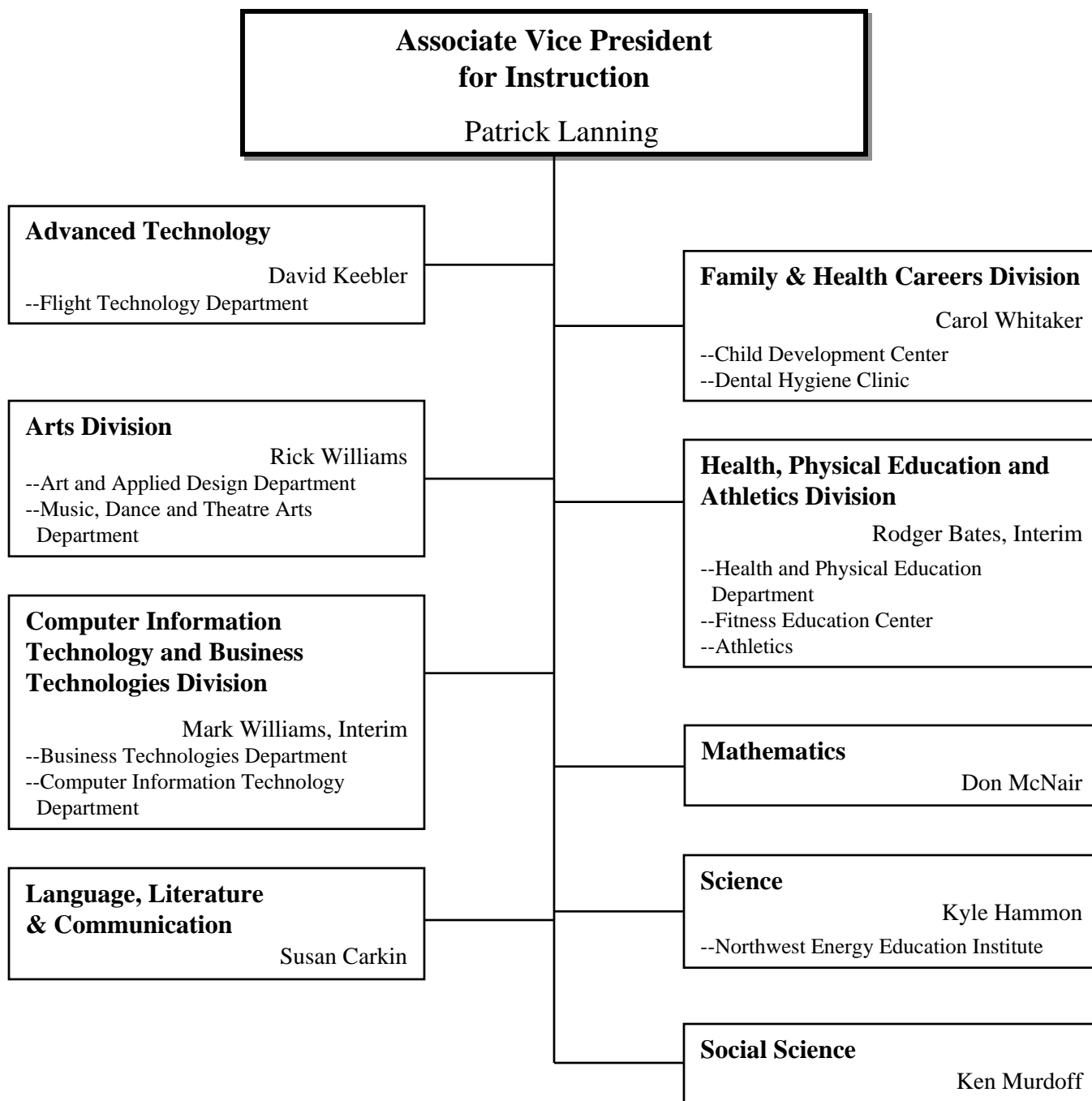
College Operations



Instruction & Student Services



Instruction & Student Services



Instruction & Student Services

**Associate Vice President
for Instruction & Student Services**

Donna Koechig

Center for Learning Advancement

Cathy Lindsley

- Academic Learning Skills
- English as a Second Language/
International ESL
- Tutoring Services

Dawn DeWolf

- Adult Basic & Secondary Education
- Adult Skills Development
- Adult Basic Skills Development
- General Education Development
- Literacy

Cooperative Education

Andrea Newton

- Apprenticeship
- College Now

Counseling Development

Dan Timberlake
(Jerry de Leon)

- Academic Advising
- Career and Employment Services
- Counseling
- Human Development Department
 - Community Center for Family Counseling
- Substance Abuse Prevention
- Testing Services

(Criss Gilbert, Director)

- TRIO Learning Center

(Mary Parthemer, Director)

Disability Services

Nancy Hart

Enrollment Services

Helen Garrett

- High School /Community Relations
- International Admissions
- Accounts Receivable
- Students First! Center
- Student Records
- Veterans

Library

Nadine Williams

Student Financial Services

Bert Logan

- Financial Aid
- Sponsored Accounts and Scholarships
- Student Accounts

Student Life & Leadership Development

Barbara Delansky

- ASLCC
- ASLCC Child Care Co-op
- Lane Family Connections
- Multicultural Center
 - International Student Program
 - Native American Student Program
 - Rites of Passage Program
- Student Activities, Clubs and Organizations

The Torch

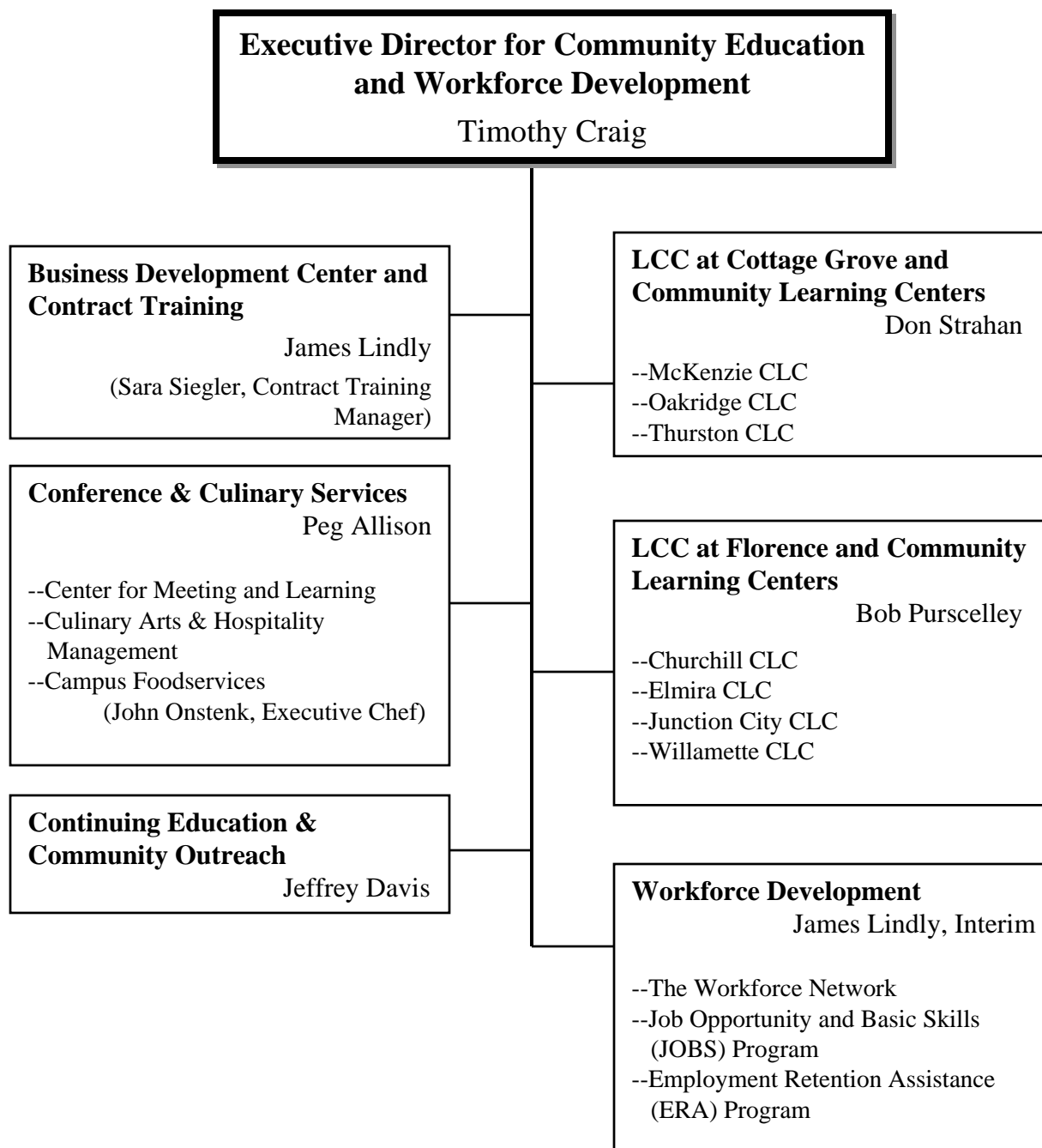
Dorothy Wearne

Women's Program

Kate Barry

- Access
- Transitions to Success
- Women's Center

Instruction & Student Services



Lane Community College History Highlights

- 1938** Eugene Vocational School offers first class.
- 1958** Eugene Technical-Vocational School offers first class.
- 1964** Formation of community college district is approved by voters. Board of Education is elected. Lane Community College is founded on October 19.
- 1965** Board finalizes the permanent location of the college by receiving a 105.81 acre tract of land southeast of Eugene, donated by Wilfred Gonyea, a Eugene industrialist.
Lane begins first regular year of instruction with staff of 138 and enrollment of 1,435 full-time equivalent students
- 1966** Lane is granted candidacy status for accreditation by Northwest Association of Schools and Colleges.
Lane graduates first class of 163 students.
- 1967** KLCC-FM begins broadcasting.
- 1968** Classes begin at new campus, 4000 East 30th Avenue, in southeast Eugene.
Full accreditation is awarded by Northwest Association of School and Colleges.
- 1972** Joe Romania and Lew Williams donate 127 acres, nearly doubling the size of the campus.
- 1974** Ten-year accreditation is awarded to college by Northwest Association of Schools and Colleges.
- 1976** Siuslaw Area Center opens in Florence.
- 1977** Downtown Center opens.
Central Area Education Center opens in Cottage Grove.
- 1979** First telecourse is offered.
- 1981** Business Assistance Center opens.
- 1984** Ten-year accreditation is awarded to Lane.
Oregon Small Business Development Network is formed and housed at Lane.
- 1985** Twentieth birthday celebration - "20 years...a great beginning!"
- 1987** Single parent/displaced homemaker "Transitions to Success" program starts.
ClassLine Touchtone registration system is introduced.
- 1988** Weekend College begins offering classes on Saturdays.
- 1989** Lane celebrates twenty-fifth anniversary - "25 years of building successes."
- 1990** New college tax base is approved. Ballot Measure 5 (property tax limitation) passes statewide.
Lane enrolls 600,000th student.

Lane Community College History Highlights

- 1993** Lane helps recruit Symantec, a software company, to Eugene; trains 90 new employees for the company.
College Council adopts vision statement: "Lane Community College provides a quality learning experience in a caring environment."
First Eugene airshow in many years is coordinated by the LCC Foundation as a benefit for Lane's Aviation Maintenance program.
Lane's 1992-93 enrollment sets a record of 35,570 headcount and 9,719.9 FTE.
- 1994** Four varsity sports - men's and women's cross country, men's baseball, and women's volleyball - are reinstated, funded by a fee approved by students.
Lane begins its 30th anniversary (1994-95) celebration with a 1960's style sock hop for staff and students.
College is granted accreditation for a ten-year period.
- 1995** STARTech, a pre-employment training program for high-tech jobs, is launched by Lane, Sony Disc Manufacturing, and Symantec Corporation.
Voters approve a \$42.8 million construction bond issue for the college.
Associate of Arts Oregon transfer degree is offered via distance learning.
Lane's first web page is posted on the internet.
- 1996** Student's First! Process Redesign Project is launched.
African American Rites of Passage Summer Academy is established by Lane and the African American Community Coalition.
Hyundai Semiconductor America contracts with Lane to train manufacturing technicians.
Lane is the only community college invited to the Harvard Invitational Debate Championships.
- 1997** Annual registration begins at Lane, allowing continuing credit students to reserve classes a year at a time.
Lane is cited for excellence in "A Learning College for the 21st Century," a new book by League for Innovation Exec. Dir. Terry O'Bannon, published by the American Council on Education and the American Association of Community Colleges.
LCC at Cottage Grove opens new facility, funded by the \$42.8 million construction bond approved by voters in 1995.
Lane's Learning Center at Thurston High School opens. It is the first of eight neighborhood facilities funded by the construction bond.
- 1998** Lane's Community Learning Centers at Willamette High School and Churchill High School open.
Student's First! Center opens on the second floor of the Center Building. The center provides one-stop service to students for general information, enrollment, student records, financial aid, financial transactions and referrals.
Lane receives a Federal Aviation Administration safety award for 200,000 consecutive hours and 25 million miles of professional flight training since 1967 without a single injury accident.
A new logo is selected after nearly a year of work and input from more than 70 members of the campus community.

Lane Community College History Highlights

- 1998**
cont. The Community Learning Center project receives the Exemplary Program Award in Distance Learning from the National Council for Continuing Education and Training.
The Tutor Program receives certification from the College Reading & Learning Association.
- 1999**
The Financial Aid counter closes permanently, turning over services to Students First!.
Students First! wins the 1998-99 Exemplary Program Award for the Northwest Region from the National Council on Student Development at the American Association of Community Colleges in Nashville. Students First! is cited as an innovative rethinking of how work is performed and services are delivered to students.
Lane Foundation receives a \$2 million gift from the estate of Ralph and Gilma Greenhoot of Springfield to provide annual \$3,500 scholarships at metro area high schools beginning in September 2001.
Class schedules and the college catalog are available over the internet.
KLCC begins 24-hour programming with the addition of Jazz Overnight airing 1-5 a.m.
- 2000**
Adult Basic and Secondary Education receives the 1998-99 Secretary's Award for Outstanding Programs from the U.S. Department of Education, Division of Adult Education and Literacy.
Elmira High School Community Learning Center and Jim Pitney Learning Center at Junction City High School are built from 1995 \$42.5 million construction bond funds.
Lane is selected as one of 12 Vanguard Learning Colleges in the United States and Canada for its commitment to improving learning. Vanguard colleges will share practices and models with other colleges around the nation.
Buildings #8 (houses welding and jewelry programs) and building #1 are built from the 1995 \$42.5 million construction bond funds.
- 2001**
Dr. Mary Spilde is chosen to be Lane's sixth president by unanimous resolution of the Board of Education. Spilde was a vice president of instruction at Lane from 1995-2001.
A dual admission and enrollment program is announced by Lane and the University of Oregon. The program increases credit enrollment opportunities, advising and financial aid.
KLCC begins broadcasting in Reedsport from its new licensed radio station KLFR 89.1 FM.
The evening/weekend project is named the 2000-01 Innovation of the Year. Team PROJECT helped increase the number of degree and certificate programs which could be completed at night and on weekends, in response to community demand.
A \$2 million gift is made to the Lane Foundation by the Robert W. and Bernice Ingalls Staton Foundation. It is one of the two largest gifts in the Foundation's history. The gift will fund 20 \$5,000 annual scholarships, 15 for professional-technical students and 5 for transfer students.

