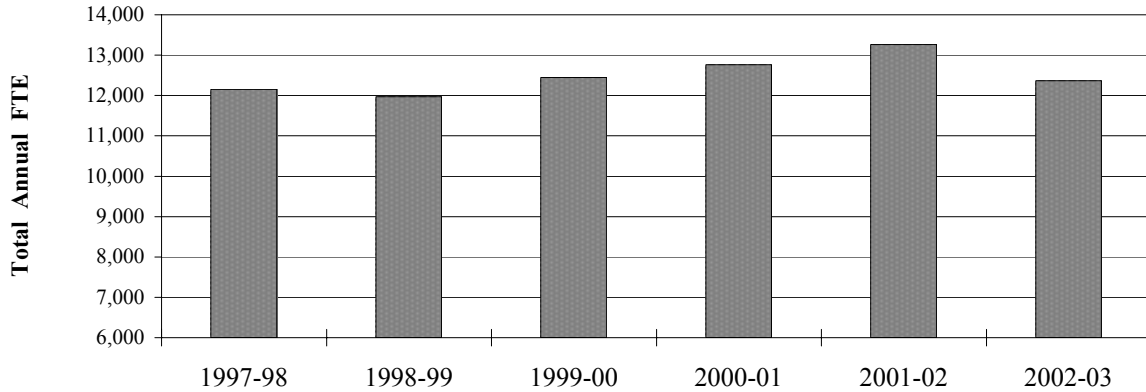


***Total Annual FTE***

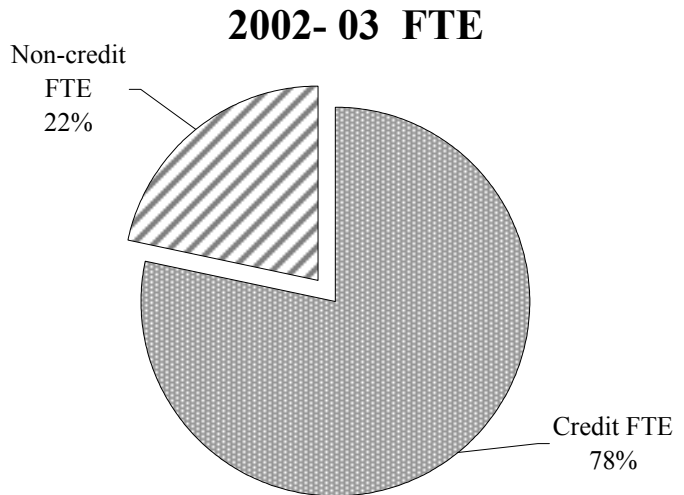
(includes reimbursable and non-reimbursable FTE)



Notes: An adjustment was made to the method used to calculate FTE for most credit classes for winter and spring terms 1999 which led to a slight decline in FTE for 1998-99.

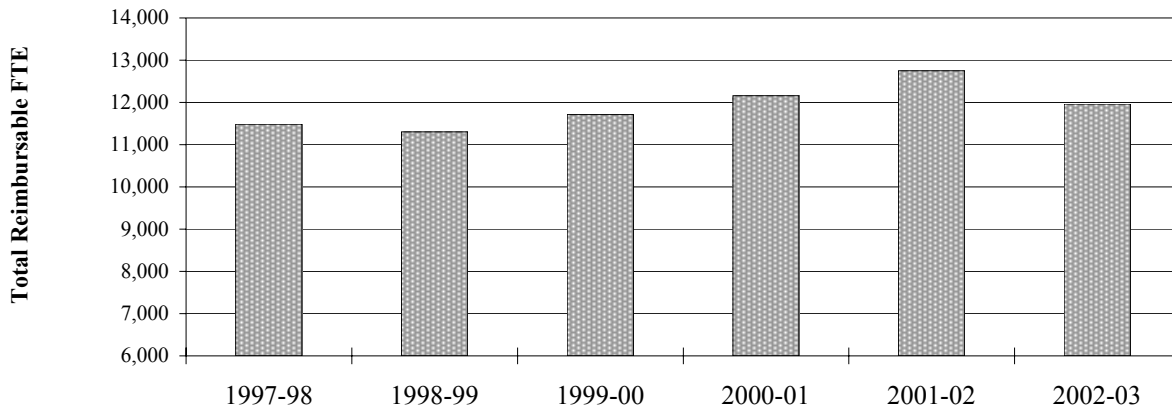
Total annual FTE for Lane decreased 6.8% in 2002-03. This includes both reimbursable and non-reimbursable FTE.

Credit FTE are derived from the following reimbursement categories: lower division collegiate, professional technical preparatory, and post-secondary remedial.



	1997-98	1998-99	1999-00	2000-01	2001-02	2002-03
Total FTE	12,148.8	11,968.3	12,449.4	12,760.1	13,265.1	12,364.3
% of Total Annual FTE	100%	100%	100%	100%	100%	100%
Yearly Change	na	-1.5%	4.0%	2.5%	4.0%	-6.8%

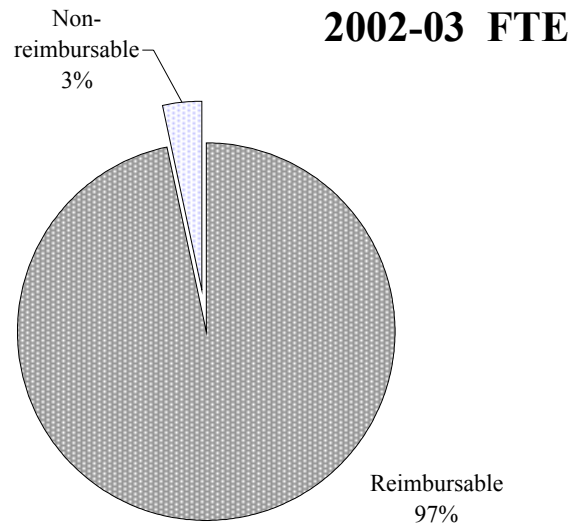
***Total Reimbursable FTE***



Notes: An adjustment was made to the method used to calculate FTE for most credit classes for winter and spring terms 1999 which led to a slight decline in FTE for 1998-99.

Total reimbursable FTE decreased 6.2% during 2002-03. Reimbursable FTE are derived from most courses taught and students enrolled at Lane. Courses yielding non-reimbursable FTE (i.e., these FTE are not considered in the state funding formula) are described by state instructional guidelines and can be generally categorized as certain types of hobby or recreation courses. Out-of-state students also yield non-reimbursable FTE.

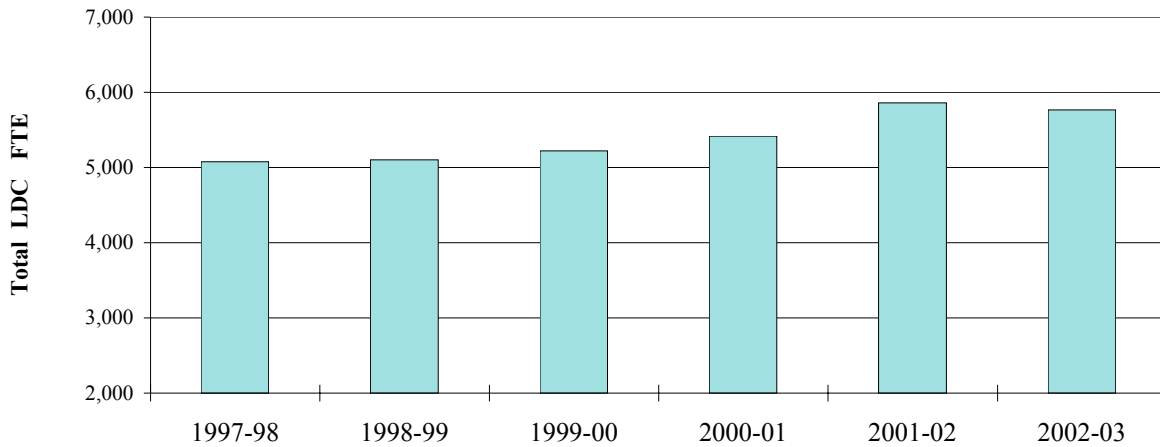
Reimbursable FTE are used in the state funding formula.



	1997-98	1998-99	1999-00	2000-01	2001-02	2002-03
Total <b>Reimbursable</b> FTE	11,485.4	11,299.4	11,709.7	12,157.1	12,746.9	11,962.5
% of Total Annual FTE	94.5%	94.4%	94.1%	95.3%	96.1%	96.8%
Yearly Change	na	-1.6%	3.6%	3.8%	4.9%	-6.2%
Cumulative Change (based on '97-98)	na	-1.6%	2.0%	5.8%	11.0%	4.2%

Source: IRZ2202 and OCCURS Course file and Enrollment Reports; "The Oregon Community College Handbook."

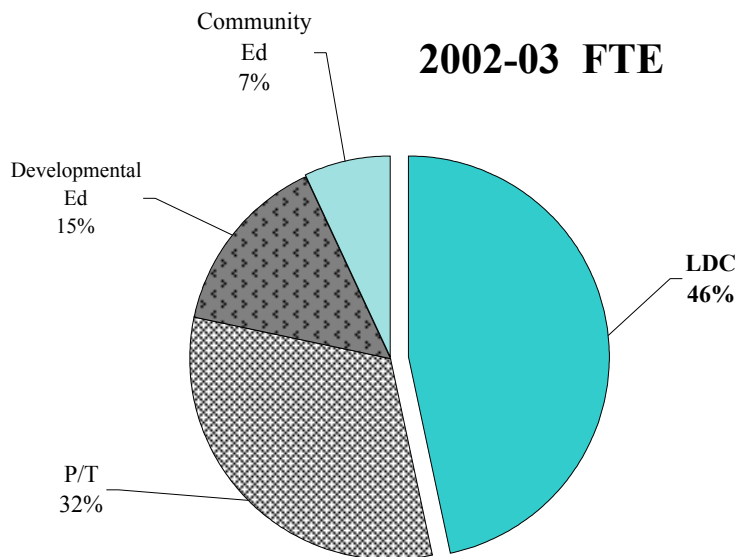
***Lower Division Collegiate (Transfer) FTE***



FTE in this reimbursement category are generated by students enrolled in courses in the Lower Division Collegiate (LDC) category. These courses are transferable to a four-year institution and apply toward a Bachelor's degree.

LDC FTE for Lane decreased 1.6% in 2002-03.

An adjustment was made to the method used to calculate FTE for most credit classes for winter and spring terms 1999 which led to a slight decline in FTE for 1998-99.

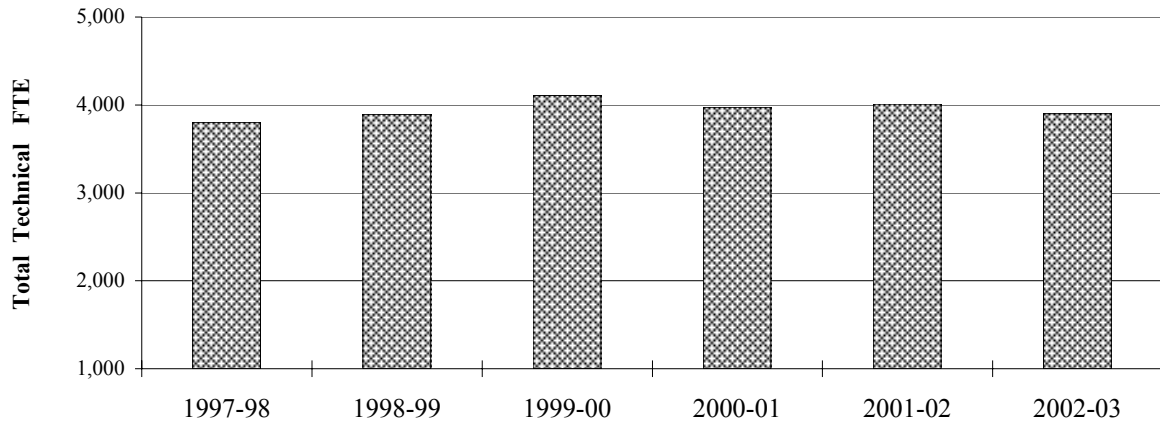


	1997-98	1998-99	1999-00	2000-01	2001-02	2002-03
Total LDC FTE	5,078.5	5,103.3	5,223.1	5,418.6	5,860.9	5,767.9
% of Overall Total	41.8%	42.6%	42.0%	42.5%	44.2%	46.6%
Yearly Change	na	0.5%	2.3%	3.7%	8.2%	-1.6%
Cumulative Change (based on '97-98)	na	0.5%	2.8%	6.7%	15.4%	13.6%

Source: IRZ2202; OCCURS Annual Enrollment Rpt. ('02-03).

r:\profile\2002-03\fte\ldc\_fte.xls

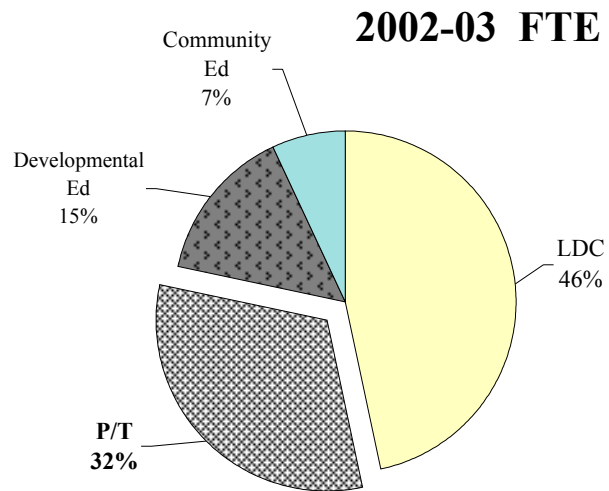
***Professional and Technical FTE***



Professional and Technical courses include the reimbursement categories of Preparatory, Supplementary, and Apprenticeship. FTE in this broad group decreased 2.7% in 2002-03.

Tech Prep courses enable high school students to begin to train for a professional technical career while still in high school and to earn college credits while doing so.

An adjustment was made to the method used to calculate FTE for most credit classes for winter and spring terms 1999 which led to a slight decline in '98-99 FTE.

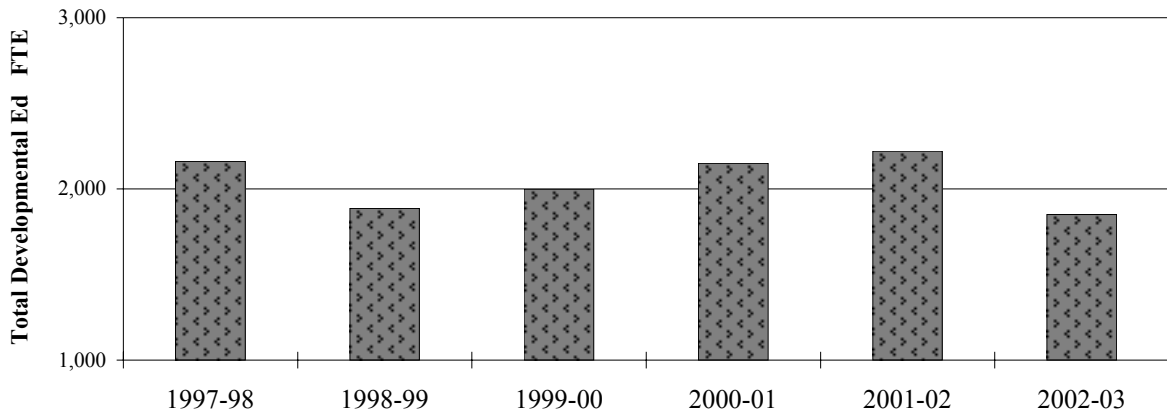


	1997-98	1998-99	1999-00	2000-01	2001-02	2002-03
Total <b>Prof. &amp; Tech.</b> FTE	3,800.8	3,893.1	4,109.8	3,973.5	4,009.0	3,902.4
% of Overall Total	31.3%	32.5%	33.0%	31.1%	30.2%	31.6%
Yearly Change	na	2.4%	5.6%	-3.3%	0.9%	-2.7%
Cumulative Change (based on '97-98)	na	2.4%	8.1%	4.5%	5.5%	2.7%
Preparatory	2,639.8	2,716.9	2,781.8	2,759.2	2,962.4	2,993.7
Supplementary	895.6	914.3	911.6	927.9	790.6	695.5
Apprenticeship	265.4	261.9	416.4	286.4	256.1	213.2

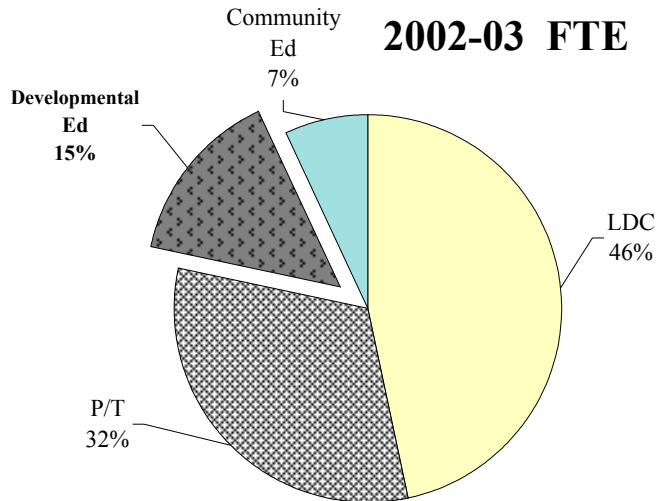
Source: IRZ2202; OCCURS Annual Enrollment Rpt. ('02-03).

r:\profile\2002-03\fte\P\_T.xls

***Developmental Education FTE***



The broad group of Developmental Education includes courses from the following reimbursement categories: English as a Second Language (ESL), Adult Basic Education (ABE), General Education Development (GED), Adult High School (AHS), and Post-Secondary Remedial (PSR).

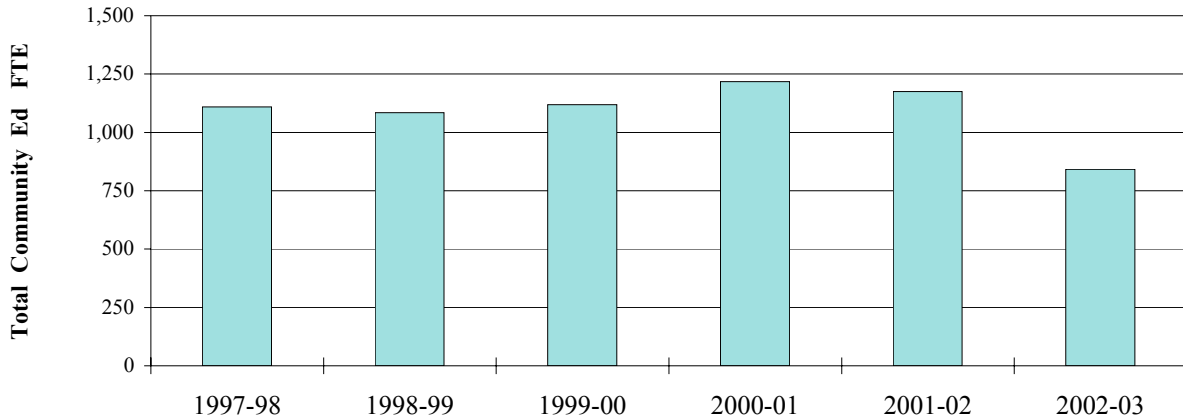


	1997-98	1998-99	1999-00	2000-01	2001-02	2002-03
<b>Total Developmental FTE</b>	2,160.4	1,886.8	1,997.5	2,150.4	2,219.8	1,851.3
% of Overall Total	17.8%	15.8%	16.0%	16.9%	16.7%	15.0%
Yearly Change	na	-12.7%	5.9%	7.7%	3.2%	-16.6%
Cumulative Change (based on '97-98)	na	-12.7%	-7.5%	-0.5%	2.8%	-14.3%
ESL	288.2	237.8	308.3	272.1	298.9	308.0
ABE	393.2	402.6	365.7	540.7	508.6	295.4
GED	357.4	277.7	278.5	271.4	245.8	276.1
AHS	506.4	330.6	311.5	283.2	251.2	55.9
PSR	615.2	638.1	733.5	783.1	915.3	915.9

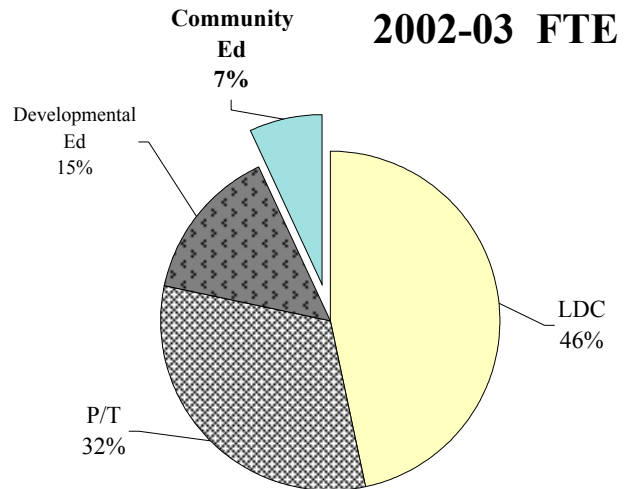
Source: IRZ2202; OCCURS Annual Enrollment Rpt. ('02-03).

r:\profile\2002-03\fte\devel\_ed.xls

***Community Education FTE***



FTE in this group are derived from courses in the Self-Improvement and Non-reimbursable reimbursement categories (Note: The Self-Improvement category was changed to Adult Continuing Edn. in 2002-03 and classes other than workforce training and health related are no longer eligible for state reimbursement funding). Lane departments contributing to this group include the Business Development & Contract Training, Continuing Education & Educational Outreach, LCC at Cottage Grove and LCC at Florence. Note: Non-reimbursable FTE are derived from a particular category of courses and from out-of-state students enrolling in courses that would otherwise yield reimbursable FTE.

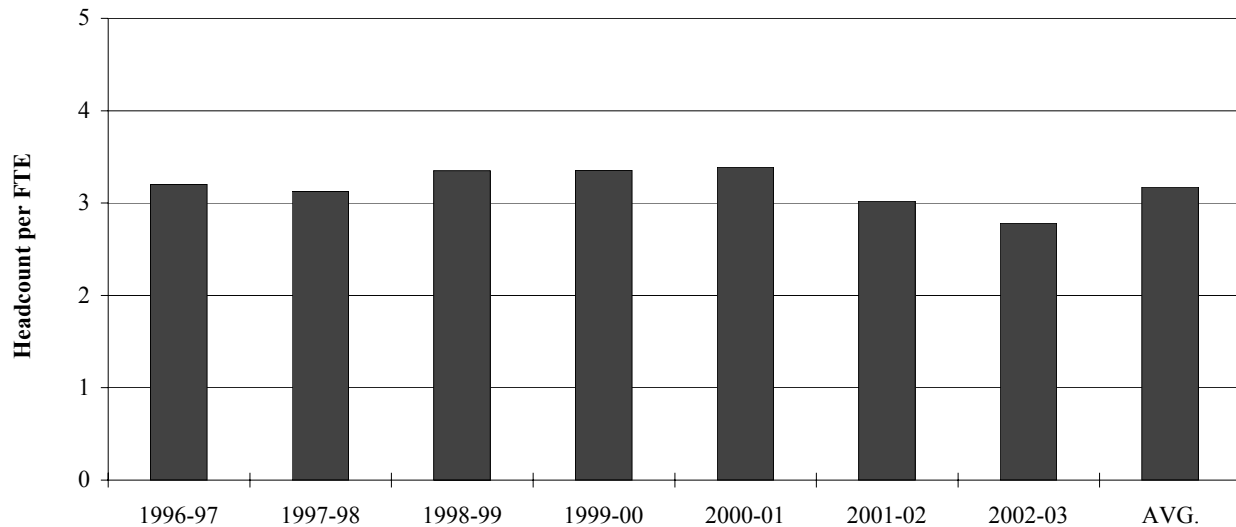


	1997-98	1998-99	1999-00	2000-01	2001-02	2002-03
Total <b>Community Ed</b> FTE	1,109.1	1,085.2	1,119.0	1,217.6	1,175.1	842.3
% of Overall Total	9.1%	9.1%	9.0%	9.5%	8.9%	6.8%
Yearly Change	na	-2.2%	3.1%	8.8%	-3.5%	-28.3%
Cumulative Change (based on '97-98)	na	-2.2%	0.9%	9.8%	6.0%	-24.1%
Self-Improve./Adult Continuing Edn.	886.2	925.5	932.5	1,016.3	989.1	696.0
Non-Reimbursable	222.8	159.7	186.5	201.3	186.1	146.3

Source: OCCURS Annual Enrollment Rpts.

r:\profile\2002-03\fte\comm\_ed.xls

***Headcount per FTE***



Note: An adjustment was made to the method used to calculate FTE for most credit classes for winter and spring terms 1999 which led to a slight decline in FTE for 1998-99.

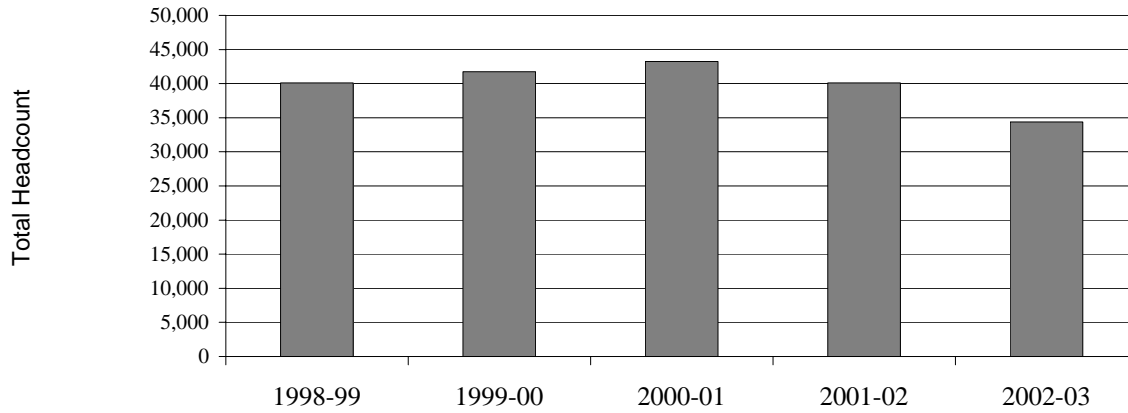
The average headcount per FTE in the graph above is based on 1996-97 through 2002-03 ratios. In 2002-03, it took an average of 2.78 students to generate one 510-clock-hour FTE.

	1996-97	1997-98	1998-99	1999-00	2000-01	2001-02	2002-03
Total FTE	12,007.3	12,148.8	11,968.3	12,449.4	12,760.1	13,265.1	12,364.3
Total Headcount	37,841	37,954	40,113	41,766	43,223	40,099	34,394
<b>Headcount per FTE</b>	3.15	3.12	3.35	3.35	3.39	3.02	2.78
Yearly Change	na	-0.9%	7.3%	0.1%	1.0%	-10.8%	-8.0%
Cumulative Change	na	-0.9%	6.3%	6.5%	7.5%	-4.1%	-11.7%

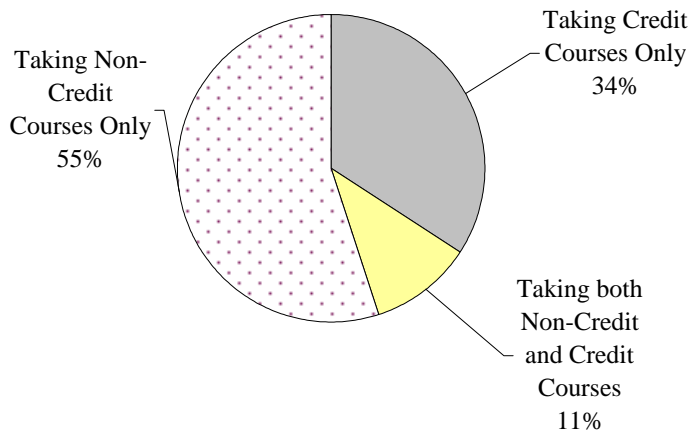
(based on '96-97)

Sources: FTE = IRZ2202; Headcount = OCCURS Student files

## Total Headcount



### 2002-03 Headcount

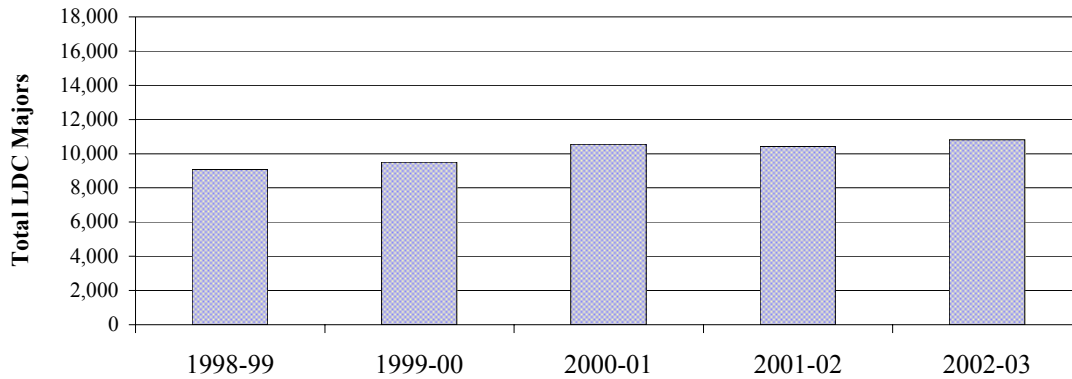


	1998-99	1999-00	2000-01	2001-02	2002-03
Total Headcount	40,113	41,766	43,223	40,099	34,394
Yearly Change	na	4.1%	3.5%	-7.2%	-14.2%
Cumulative Change	na	4.1%	7.8%	0.0%	-14.3%

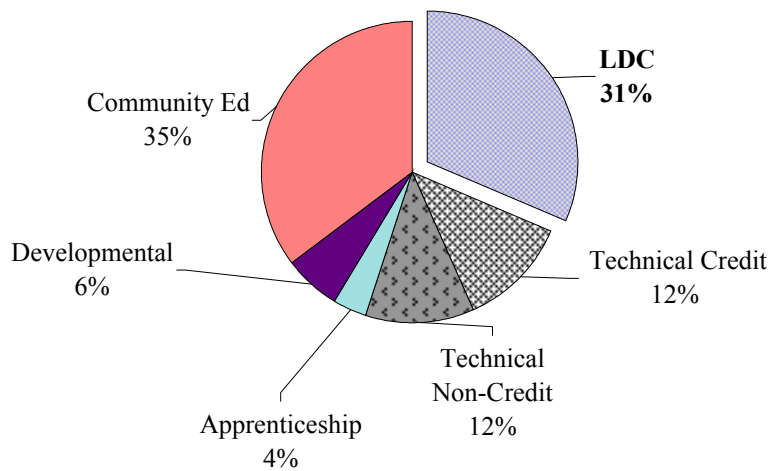
(based on '98-99)

Students were counted as credit students if they were enrolled in credit courses any term they attended Lane in 2002-03. Credit courses include credit, College High, and Tech Prep courses. Credit courses do not include Adult High School, Adult Basic Ed, and non-credit courses.

***Lower Division Collegiate (Transfer) Majors -- Headcount***



**2002-03 Majors**



Lower Division Collegiate (LDC) majors are students who have declared majors in Transfer programs. These majors include the AAOT, AS, and AG degree majors.

	1998-99	1999-00	2000-01	2001-02	2002-03
Total LDC Headcount	9,068	9,503	10,545	10,425	10,817
% of Overall Total	22.6%	22.8%	24.4%	26.0%	31.5%
Yearly Change	na	4.8%	11.0%	-1.1%	3.8%
Cumulative Change	na	4.8%	16.3%	15.0%	19.3%

(based on '98-99)