

**Lane Community College Resource Use, Tracking, Feedback - Year Reported: 2016/2017
Energy Summary Data**

DESCRIPTION	DATA
Total electricity and natural gas energy resources purchased in 2016/2017*. MMBTU= Millions of British Thermal Units. (Please see the 'Energy Use Index' page for Unit Conversions.)	90,049 MMBTU
Total LCC Building Square footage for 2016/2017	1,304,192 ft ²
Total energy use per building square foot per year for 2016/2017 in Btu and Kbtu per square foot. This is the college's annual Energy Use Index (EUI).	69,046 Btu/ft ² or 69 Kbtu/ft ²
How many average Lane County residential houses^ would the college's total electricity and natural gas energy purchase in 2016/2017 have powered?	Approximately 1679 houses
Total energy cost for 2016/2017	\$1,133,121
Total energy cost per building square foot per year	\$0.87/ft ²
Total energy decrease for 2016/2017 over the baseline year of 2004/2005. (Please see table below for baseline data.)	(11,768) MMBTU or (12)%

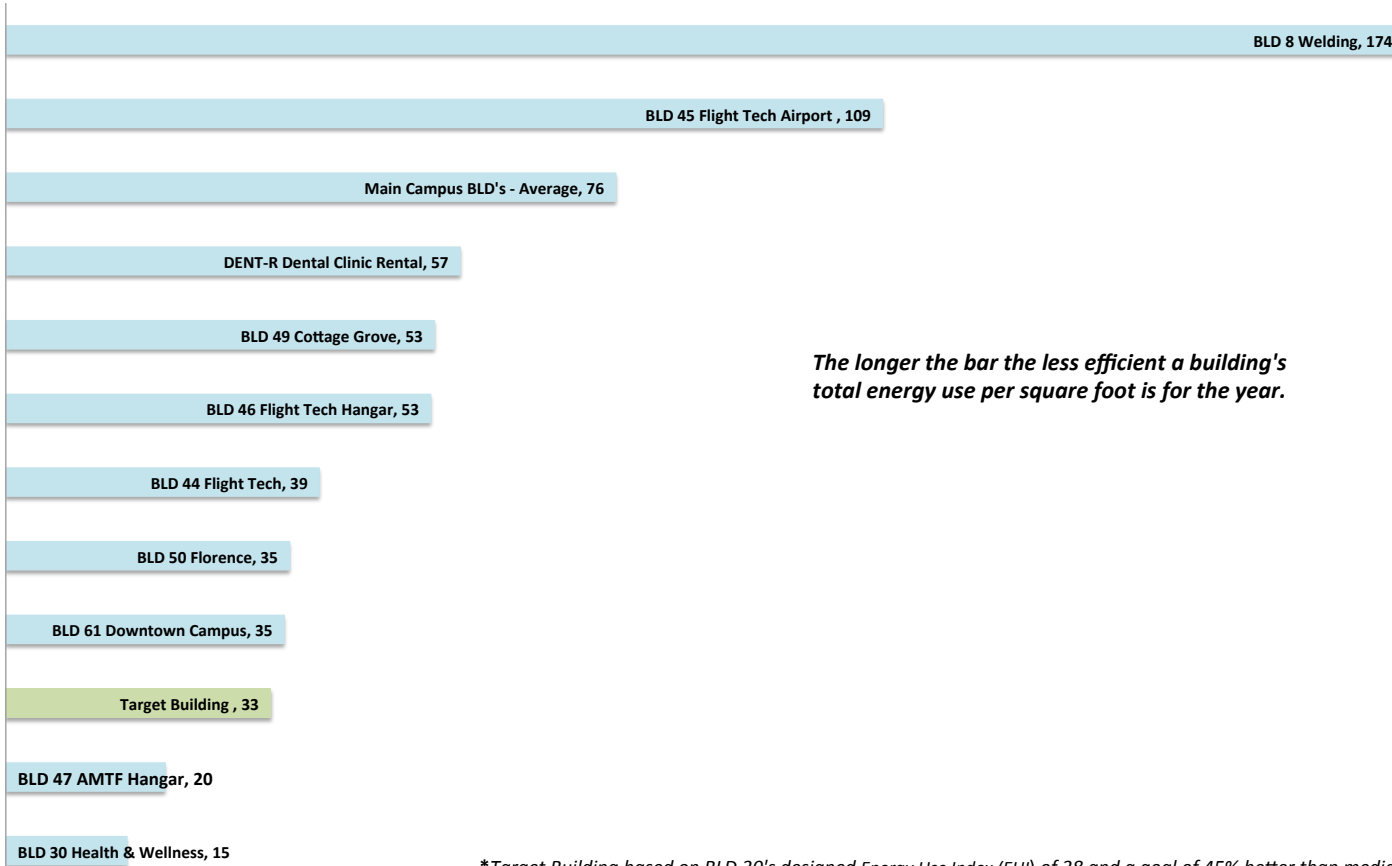
* Includes energy used for heating, cooling, and equipment.

^ Based on the EPUD average customer's monthly electricity usage of 1310 kwh per month or 15,720 kwh per year.

DESCRIPTION	DATA
Total electricity and natural gas energy resources purchased in 2004/2005*. MMBTU= Millions of British Thermal Units. (Please see the 'Energy Use Index' page for Unit Conversions.)	101,817 MMBTU
Total LCC Building Square footage for 2004/2005	1,120,326 ft ²
Total energy use per building square foot per year for 2004/2005.	90,882 Btu/ft ² or 90 Kbtu/ft ²

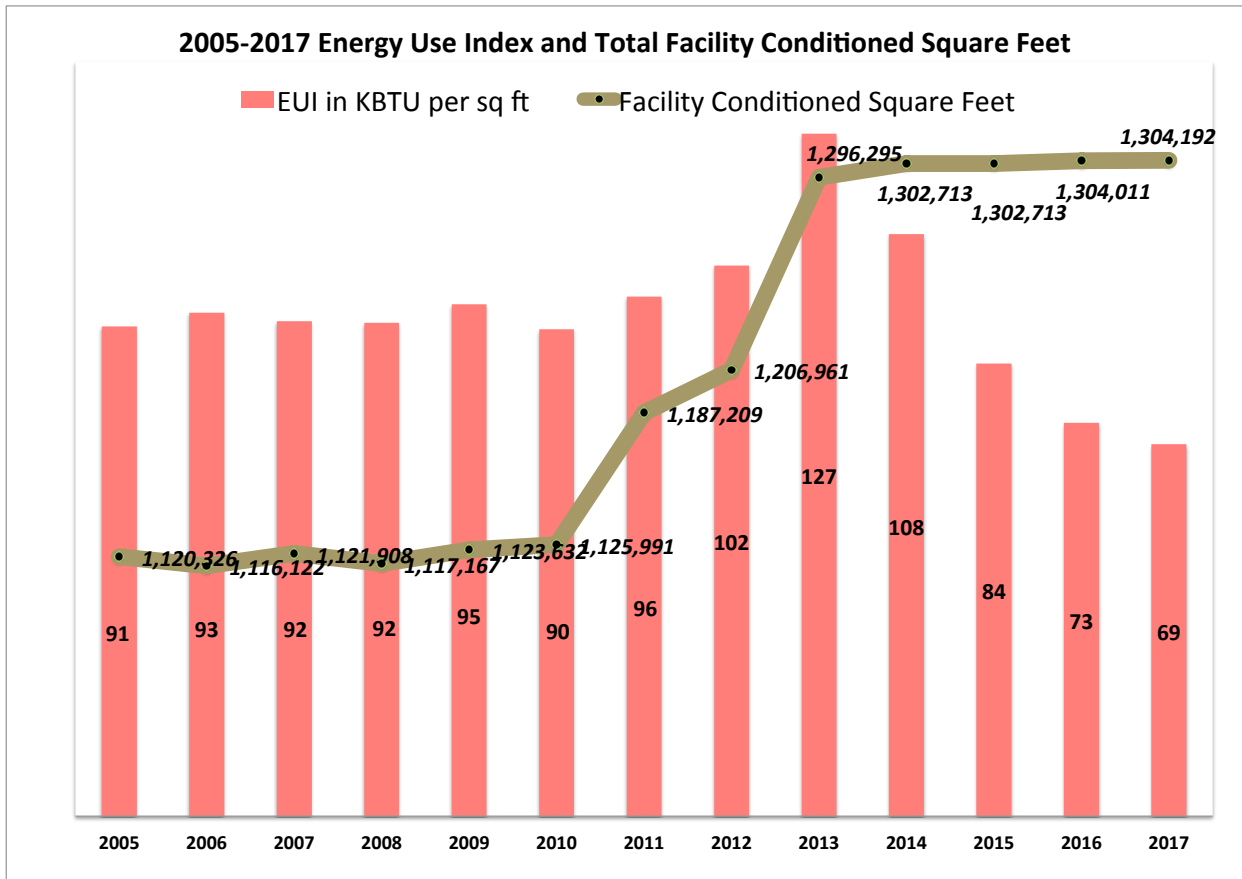
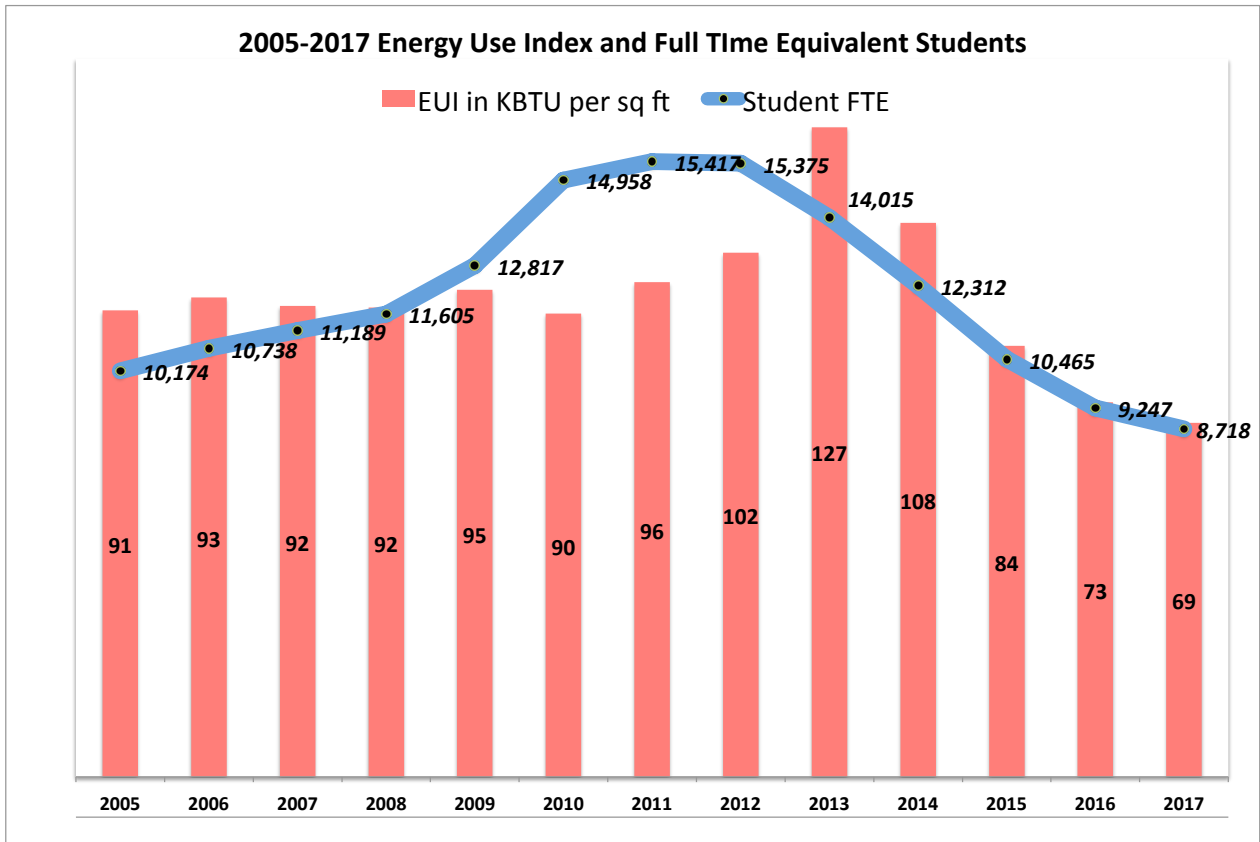
SUMMARY COMMENTS	RECOMMENDATIONS
<i>Continuing our downward trend for lowering energy use index. Contributing factors to this decrease may be the declining staff and student population combined with an increase in building square footage over baseline 2005 and new Central Plant chilled water system coming on line.</i>	<i>Continue with behavior change campaigns to strengthen lower energy use patterns. Start to transition building equipment scheduling to a software for a service (SAS) model in buildings that are BACnet compatible.</i>
<i>Energy use index is calculated by taking the total energy use and dividing it by total square footage of our facilities.</i>	<i>Work with Facilities staff to make recommendations aligning with LEED v4. Implement building equipment maintenance tune ups, widen occupied room temperature setpoints</i>

2016-2017 LCC Facilities Total Energy Use Index in Kilo British Thermal Units per Square Feet per year



The longer the bar the less efficient a building's total energy use per square foot is for the year.

**Target Building based on BLD 30's designed Energy Use Index (EUI) of 38 and a goal of 45% better than median EUI.*



**Lane Community College Resource Use, Tracking, Feedback – Year Reported: 2016/2017
Energy Summary Data**

Energy Use Index

Source or Action	Description	Value
Utility Data	Electricity (kwh) ¹	12,216,947
Convert to MMBtu	Electricity (MMBtu)	41,684
Utility Data	Natural gas and diesel No. 2 fuel(therms) ^{1,4}	483,649
Convert to MMBtu	Natural gas and diesel No. 2 fuel(MMBtu)	48,365
Convert to MMBtu	Total energy (MMBtu)	90,049
Convert to KBtu	Total energy (KBtu)	90,049,123
Convert to kwh	Total energy (kwh)	26,391,888
LCC Data	FTE students 2	8,718
LCC Data	Staff 2	913
LCC Data	Total FTE students + staff ²	9,631
LCC Data	Building square footage ³	1,304,192
	Total energy per student FTE per year (KBtu)	10,329
Energy Use Index	Total energy per campus user per year (KBtu)	9,350
Energy Use Index	Total energy use per building square foot per year (KBtu/ft2)	69
Energy Use Index	Total energy use per building square foot per year (Btu/ft2)	69,046
Energy Use Index	Total energy use per building square foot per year (kwh/ft2)	20

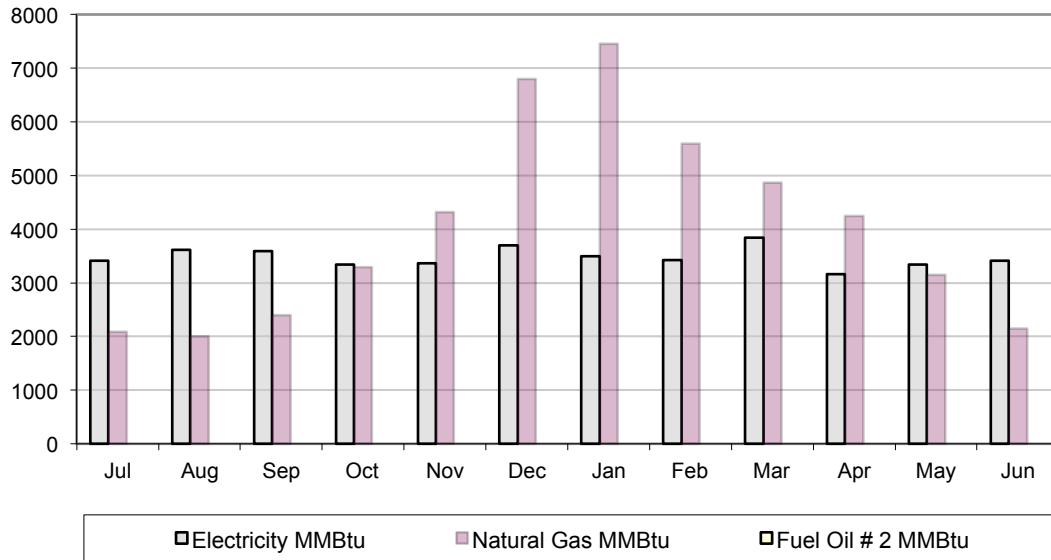
1 Information on the Institute for Sustainable Practices data volume in the folder Energy Indicator Reports on newberry\dca\ISP\Energy Indicator Reports\2017 and in a three ring binder labeled "Utilities Summary" located in Building 7, Campus Services RM 203.
2 Information from Institutional Research, Assessment and Planning, Craig Taylor. Funding FTE used for students. FY headcount used for Staff from https://www.lanecollege.edu/research/ir/staff-demographics
3 See Attachment " Lane Community College Building Square Footage"
4 No diesel No. 2 deliveries made to the 30th boilers FY10 thru FY17.

Lane Community College Resource Use, Tracking, Feedback
Year Reported: 2016/2017
Energy Summary Data

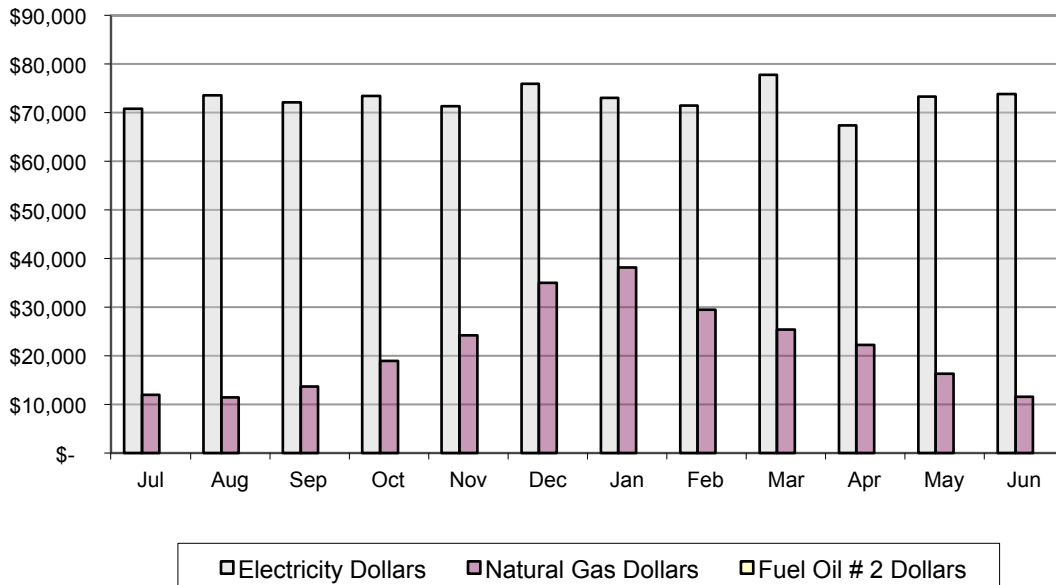
Cost Data

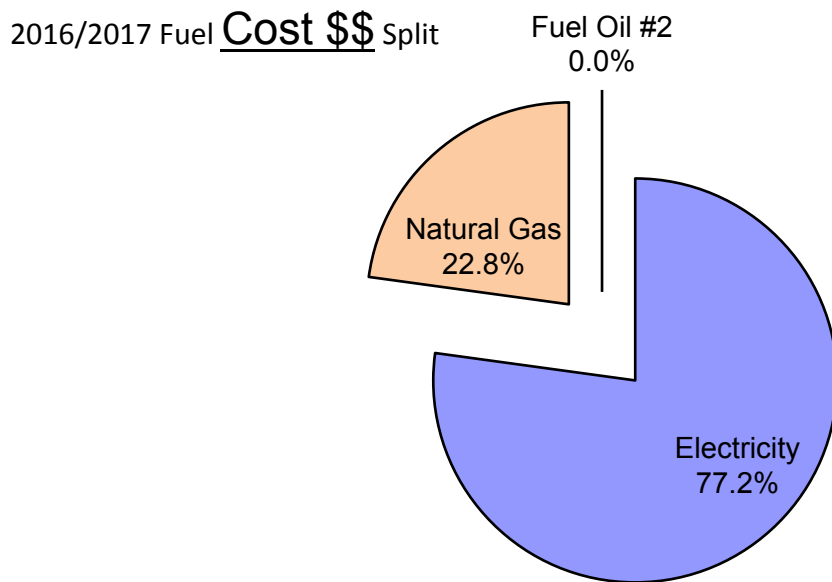
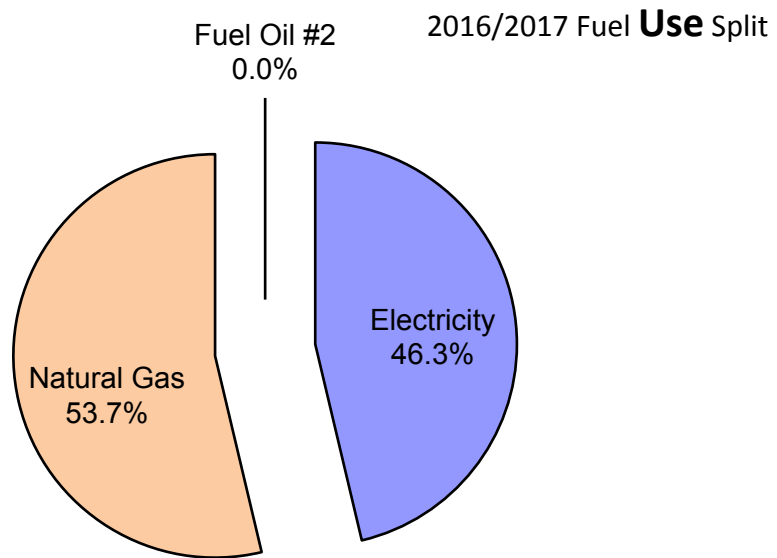
Source or Action	Description	Value
Utility Data	Electricity (kwh) ¹	\$ 874,407
Utility Data	Natural gas and diesel No. 2 fuel(therms) ^{1,4}	\$ 258,714
	Total energy costs	\$ 1,133,121
LCC Data	FTE students (actual) ²	8,718
LCC Data	Staff ²	913
LCC Data	Total campus users (FTE students + staff)	9,631
LCC Data	Building square footage ³	1,304,011
Student Energy Costs	Total energy cost per student FTE per year (dollars)	\$ 129.98
	Total energy cost per campus user per year (dollars)	\$ 117.66
Costs Per SqFt.	Total energy cost use per building square foot per year (\$/ft2)	\$ 0.87

2016-2017 Fuel Use Split
Monthly Energy Use in Millions of British Thermal Units

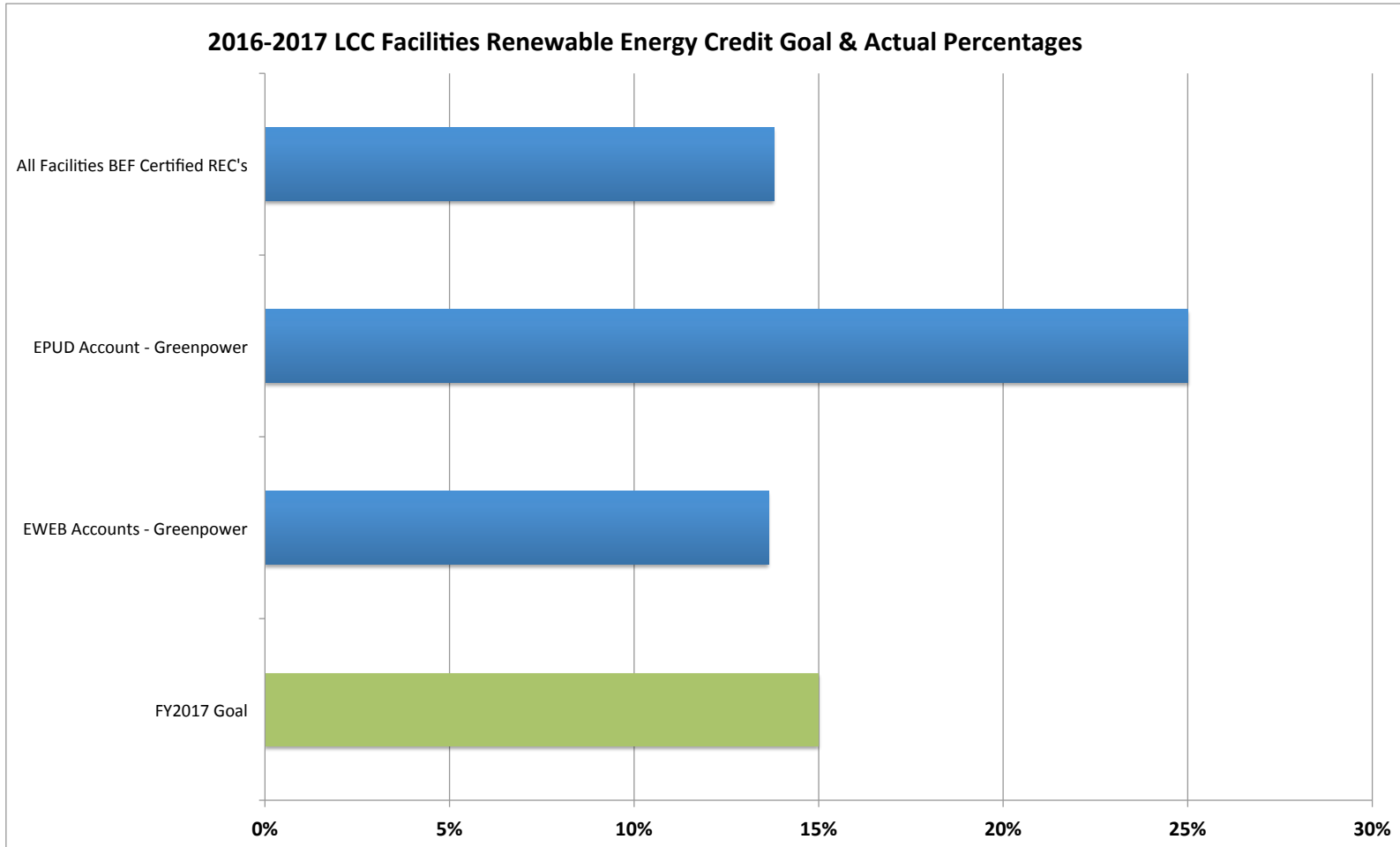


2016-2017 Fuel Cost Split
Monthly Energy Costs

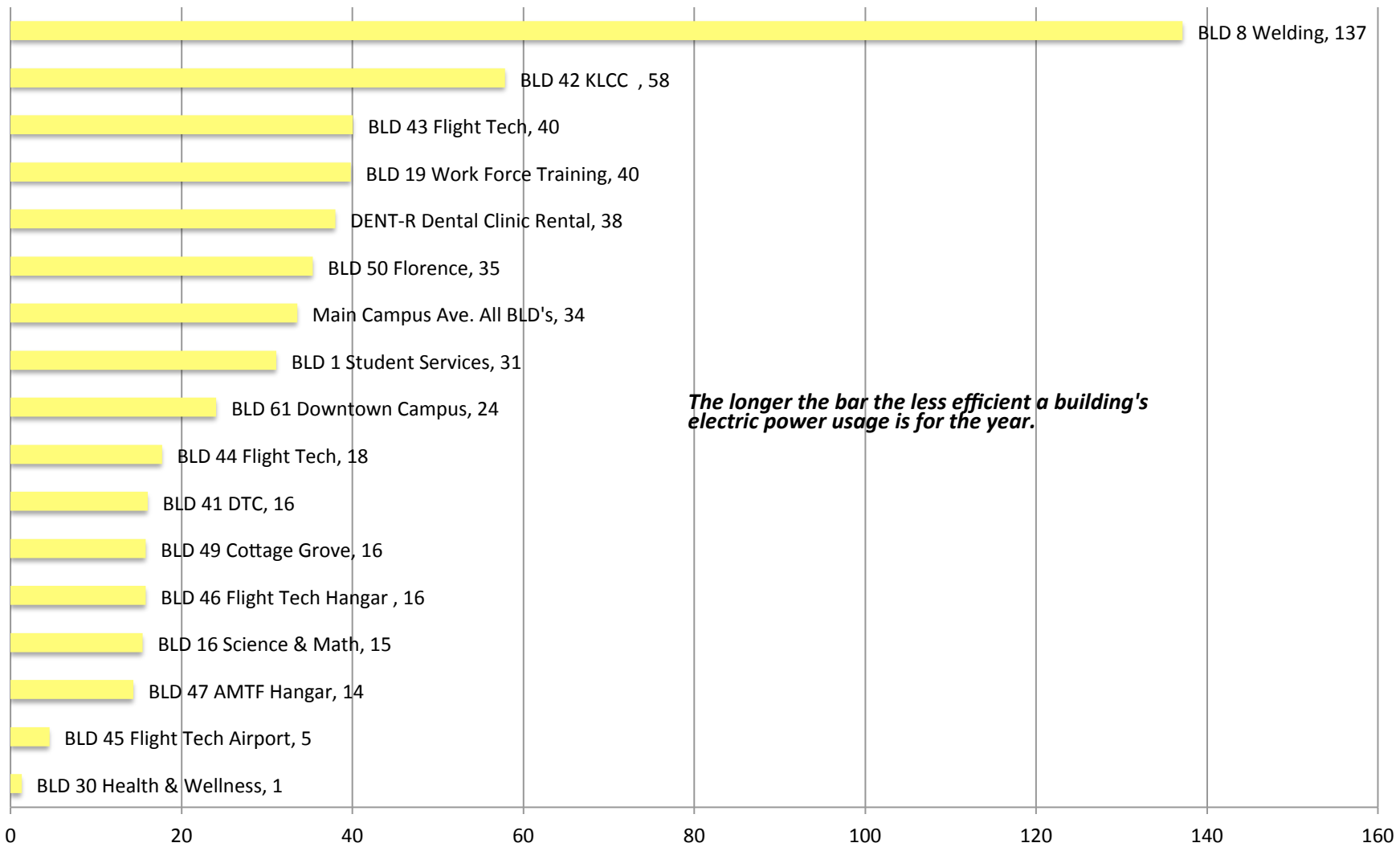




DRAFT

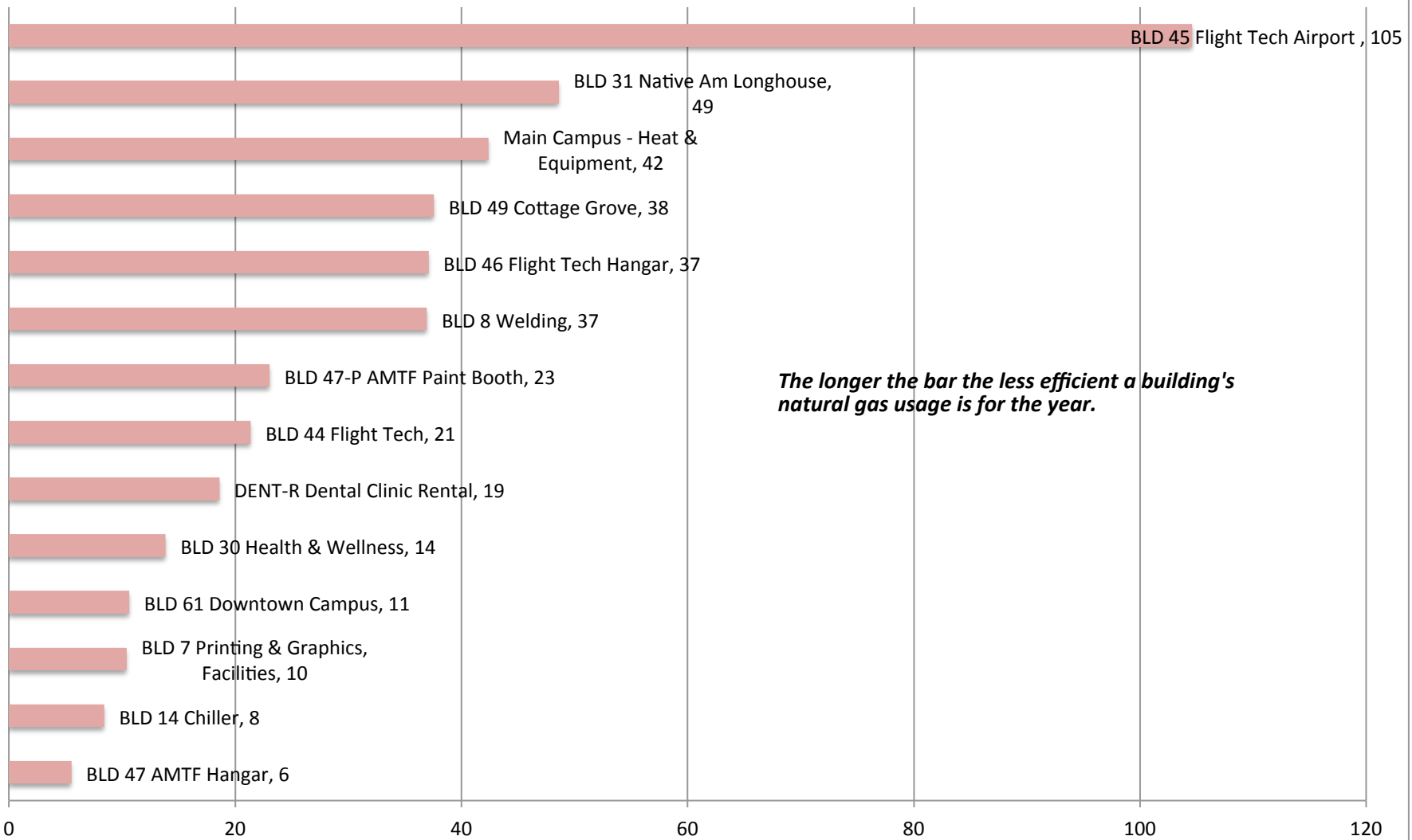


2016-2017 LCC Facilities Electrical Use in Kilo British Thermal Units (KBTU) per Building Square Foot



The longer the bar the less efficient a building's electric power usage is for the year.

2016-2017 LCC Facilities Natural Gas Use in Kilo British Thermal Units (KBTU) per Building Square Foot



The longer the bar the less efficient a building's natural gas usage is for the year.

FY 2017 Building Conditioned Square Footage**

Main Campus

Building #	Building Name	1996 - 2015	New SqFt this Fiscal Year	Total SqFt
000	Center	184,800		184,800
001	Student Services	38,903		38,903
002	Business	19,358		19,358
003	Administration	15,896		15,896
004	Health Technology	43,119		43,119
005	Physical Education	105,485		105,485
006	Performing Arts	48,507		48,507
007	Campus Services	37,796		37,796
008	Welding Technology	21,236		21,236
009	Auto/Diesel Technology	37,529		37,529
010	RTEC/Art	73,615		73,615
011	Art/GED	38,884		38,884
012	Machine Technology	60,266		60,266
013	Electronic Annex	7,179		7,179
014	Chiller Building		2,750	2,750
015	Electronics	17,077		17,077
016	Science	86,917		86,917
017	Forum	15,176		15,176
018	Industrial Technology	19,656		19,656
019	Work Force Training^	89,281		89,281
024	Child Care Center #1	3,091		3,091
025	Child Care Center #2	3,431		3,431
026	Child Care Center #3	6,490		6,490
027	Child Care Center #4	4,415		4,415
030	Health & Wellness	40,561		40,561
031	Native American Longhouse	6,543		6,543
	Main Campus Sub-Total	1,025,209	2,750	1,027,959

* 1/08 audit 6 buidngs total in 1996. Three demolished in 2002. 2 sold in FY2006. 1 demolished 2007. 1 ownership transferred in FY2015. 1 sold in FY2016.

^ 2005-08 BLD 19 square footage calculations for new additions did not include offices and stroage rooms.

** Implemented 2012 facility square footage recalculations. Reduction from FY 1996-2011 years of (26,776) sq ft.

Other Main Campus Facilities

Building #	Building Name	1996 - 2011	New SqFt this Fiscal Year	Total SqFt
023	FM&P Nursery	1500		1500
029	Comminutor Shed (WW Treatment)	660		660
032	FM&P Storage	2240		2240
033	Test Cells	3100		3100
034	Cooling Tower	1752		1752
035	PA Storage	2890		2890
036	PE Storage	1430		1430
037	Greenhouse	240		240
038	Chemical Storage Facility	297		297
n/a	3 Stop Exterior Elevator	100		100
n/a	3 Stop Exterior Elevator	160		160
n/a	Bus Station	1944		1944
n/a	Solar Station	5390		5390
	Other Main Campus Facilities Sub-Total	21703	0	21703

Branch Campuses

Building #	Building Name	1996 - 2013	New SqFt this Fiscal Year	Total SqFt
041	DTC	65,956		65,956
042	KLCC 136 w. 8th Ave.	8,200		8,200
043	Flight Tech Operations	3,680		3,680
044	Flight Tech Center	5,063		5,063
045	Flight Tech Hanger	3,710		3,710
046	Aviation Maintenance Training Facility	25,060		25,060
047	AMTF Hangar	3,710		3,710
047-P	AMTF Paint Booth	760		760
049	Cottage Grove Center (new)	19,109		19,109
050	Florence Center	17,426		17,426
061	Downtown Campus Academic	101,856		101,856
062	Downtown Campus Residential	89,733		89,733
	Branch Campuses Sub-Total	152,674	0	344,262

GRAND TOTAL

2,750 1,393,924

Campuses Managed by Other Entities

Building #	Building Name	1996 - 2013	New SqFt this Fiscal Year	Total SqFt
062	Downtown Campus Residential	89,733		89,733
	Campuses Managed By Others Sub-Total	89,733	0	89,733

GRAND TOTAL LANE MANAGED

1,304,192